

# LEARNER **GUIDE**



# Excavator

---

## TICKET

Training support material for:

**RIIMPO320F**  
Conduct civil construction  
excavator operations

Produced by:



# Contents

|   |     |
|---|-----|
| How to use this guide                   | 4   |
| Acknowledgements                        | 6   |
| Introduction to excavator               | 7   |
| General information                     | 13  |
| Chapter 1 Plan and prepare for work     | 57  |
| Chapter 2 Identify and control hazards  | 79  |
| Chapter 3 Check and monitor equipment   | 115 |
| Chapter 4 Operate/use equipment         | 139 |
| Chapter 5 Shut down and store equipment | 183 |
| Chapter 6 Maintain equipment            | 195 |
| Chapter 7 Housekeeping                  | 205 |
| Chapter 8 Record keeping                | 211 |
| Chapter 9 Relocate equipment            | 215 |
| Chapter 10 Attachments                  | 225 |

# Introduction to Excavator



## Introduction to excavator

An excavator is a machine that moves on tracks or tyres. The body can slew a full 360° without changing the position of the wheels/tracks. You use an excavator to excavate (dig), lift and carry materials. If you are planning to drive an excavator on public roads, it must be registered.



## What industries do you use an excavator in?

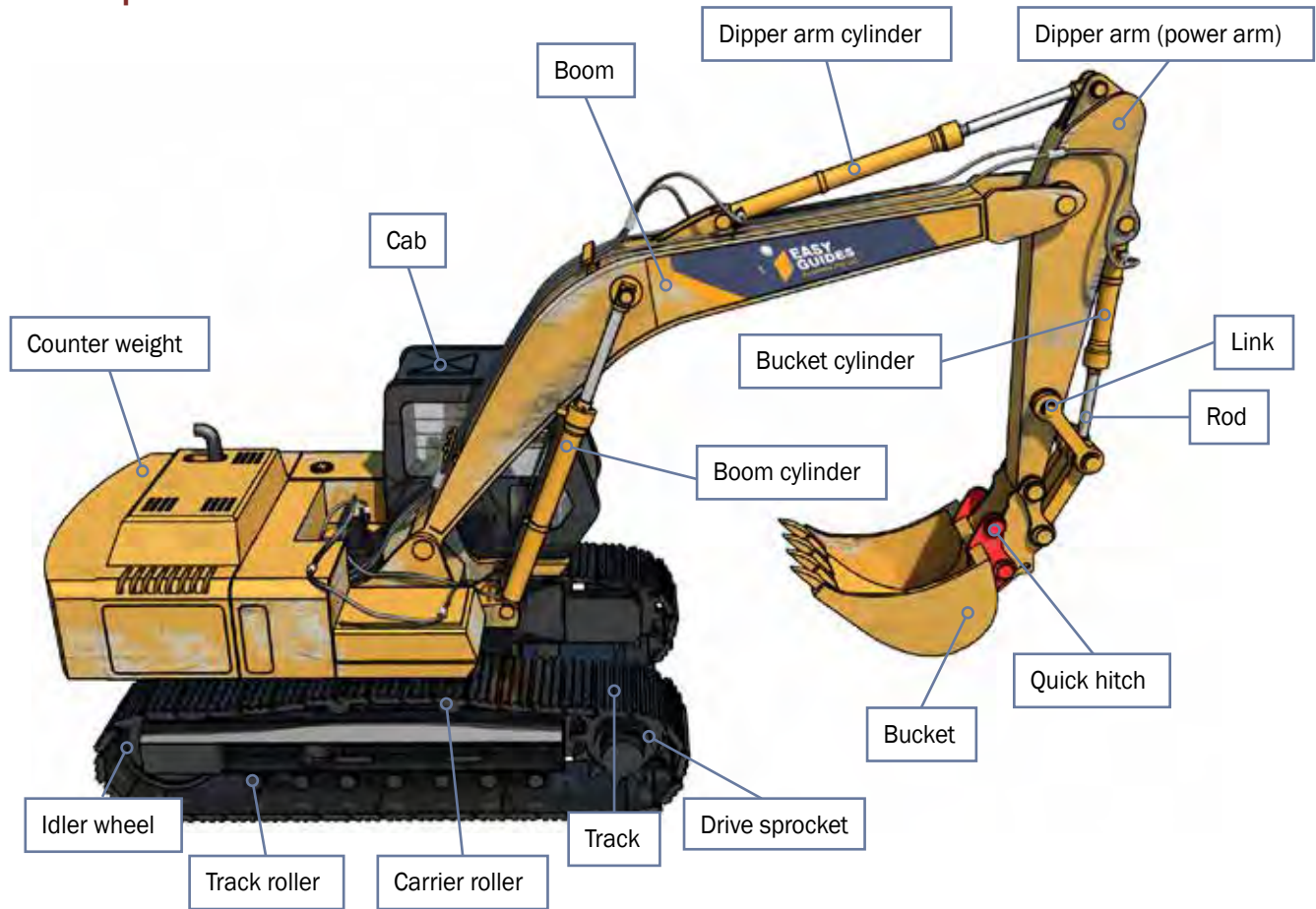
- Civil construction



- Mining



An example of an excavator



**QUESTION 30***...CONTINUED FROM PREVIOUS PAGE*

What does the safety plan tell you?

How to use tools, plant and equipment safely



Emergency procedures and exits



How to park safely and where to park



Control hazards and risks



**QUESTION 32**

You will work in a hazardous area, for example, a confined space.

What type of permit might you need to get?

You may need to get a hazardous work permit.

**Hazardous Work Permit**  
**WARNING**  
SO<sub>2</sub> Gas release immediately following entry.



**QUESTION 33**

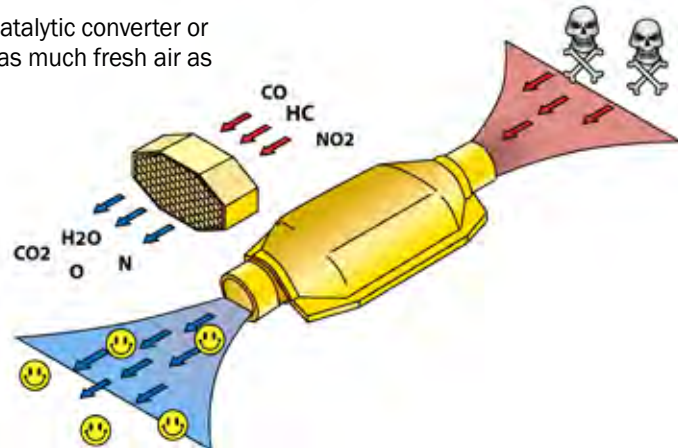
Why is it dangerous to leave the engine running in an enclosed space?

The exhaust fumes cannot escape the space, so the gasses might suffocate you or people in the enclosed space.

**QUESTION 34**

If you must work in a tunnel or enclosed space, what must the excavator have?

The excavator must have a catalytic converter or exhaust scrubber. Try to get as much fresh air as you can.

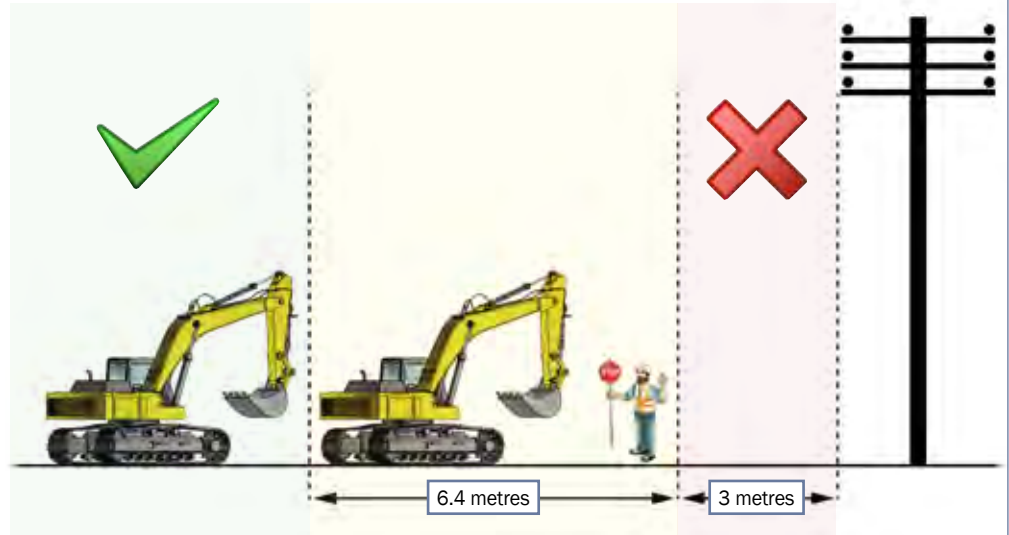




**QUESTION 43**

What is the minimum safe distance from powerlines?

Check the Australian Standards or distances in your state/territory.



**QUESTION 44**

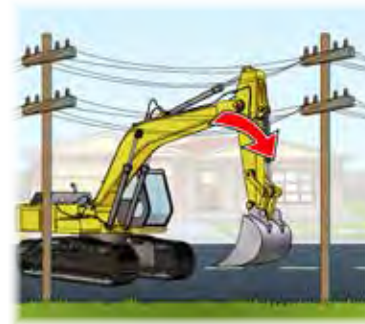
You are operating an excavator and it touches live powerlines.

What do you do?

Try to stay calm. Stay in your seat if possible.  
Tell other people to keep away.



Try to lower the bucket away from the powerlines. Ask someone to get the power turned off.



In an emergency if you are alone or you think the machine might catch fire, jump well clear of the machine.



Never touch the ground and the machine at the same time – you might get an electric shock and be injured or killed.



...CONTINUES ON NEXT PAGE