

LEARNER GUIDE



Tracked Front End Loader



Training support material for:

RIIMPO322F (Tracked)

Conduct civil construction tracked
front end loader operations

Produced by:



Contents

| | | |
|---|--|-----|
| How to use this guide | | 4 |
| Language – Literacy – Numeracy (LLN) | | 6 |
| Acknowledgements | | 8 |
| Introduction to tracked front end loaders | | 9 |
| General information | | 15 |
| Element 1 | Plan and prepare for tracked front end loader operations | 57 |
| Element 2 | Operate front end loader | 81 |
| Element 3 | Attach, secure, lift, carry and place materials | 135 |
| Element 4 | Select, remove and fit attachments | 165 |
| Element 4 | Relocate the front end loader | 187 |
| Element 5 | Conduct housekeeping activities | 211 |

Introduction to Tracked Front End Loaders



What do you use a front end loader for?

- Agriculture – farming
- Construction
- Clean up
- Moving dirt/rocks etc
- Can use for lifting purposes



What industries do you use a front end loader in?

- Civil construction



- Mining

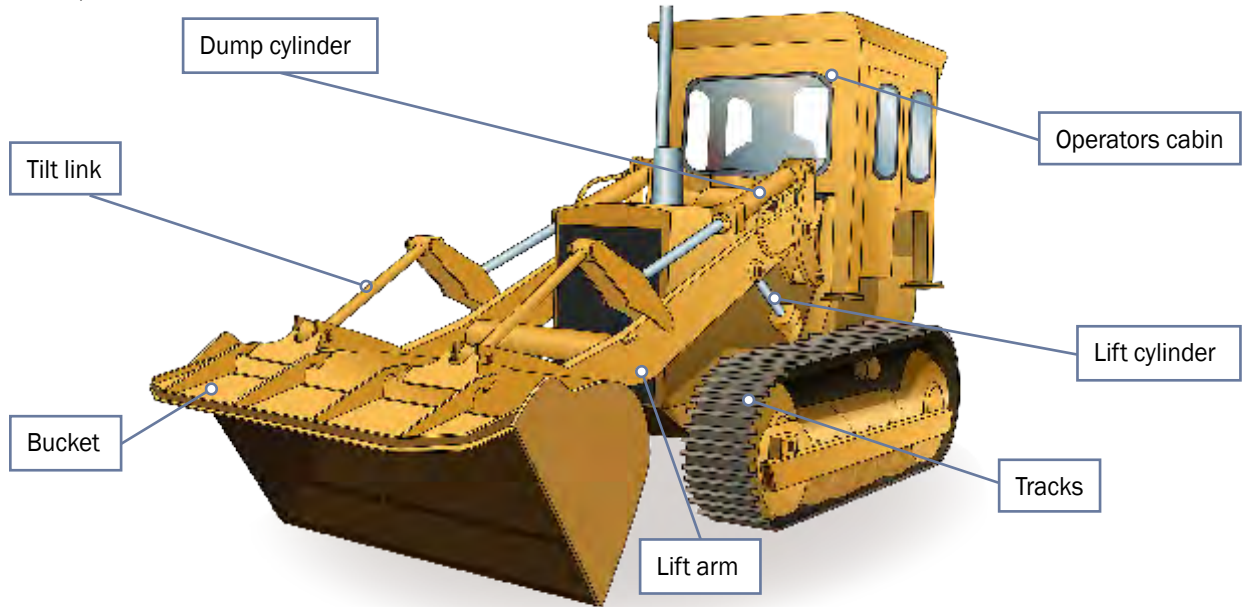


An example of a tracked front end loader

A tracked front-end loader is a type of machine that has a front mounted square wide bucket connected to the end of two booms (arms) to scoop up loose material such as dirt, sand or gravel and move it from one place to another without pushing the material across the ground.

A tracked front end loader is commonly used to move material from ground level and deposit it into an awaiting dump truck, stockpile or into an open trench excavation.

Front end loaders also come in wheeled models (refer RIIMP0321D Conduct civil construction wheeled front end loader operations).



Who has duty of care?

You have a duty of care. So does anyone who has something to do with the worksite.

Duty of care applies to:

Employers/persons conducting a business or undertaking (PCBU). This includes managers, manufacturers/suppliers, importers, designers, inspectors, etc.



Workers. This includes employees, contractors and sub-contractors, employees of labour hire companies, outworkers, volunteers, etc.



Worker's duty of care

As a worker you must take care of your own health and safety – and the health and safety of others at the workplace. You must not put your own or other people's health and safety at risk.

Never work where you believe a hazard is a serious risk to your health and safety.

You must also:

- do your best to follow reasonable health and safety instructions from your boss (PCBU)
- follow workplace health and safety policies and procedures
- do not work where you believe a hazard would be a serious risk to your health and safety.



PCBU/Employer's duty of care

The PCBU must:

- Provide a safe workplace
- Train workers and make sure they know what to do on the job
- Try to get rid of risks, or find ways to minimise risks
- Tell workers about any hazards or risks. Workers must know what to do in an emergency.
- Have a workplace safety plan. For example, workers should be trained in the use of fire fighting equipment and first aid equipment.



Penalties

If you are a PCBU/employer or a worker, the government can fine you or even imprison you for failing your duty of care.

Australian standards

Your front end loader (and its attachments) must comply with (meet) the Australian Standard (AS 1418.19). If you are going to pick and carry a suspended load, the front end loader must have documentation saying it meets Australian Standards.

QUESTION 19

What does the traffic management plan (TMP) tell you?

It tells you how to control vehicles in and around the worksite. It helps keep the site safe for you and others.

You may require a traffic control licence in your state or territory.



Operate front end loader

Element 2

