

LEARNER GUIDE



Skid Steer Loader



Training support material for:
RIIMPO318F
Conduct civil construction
skid steer loader operations

Produced by:



Introduction to Skid Steer Loader



What is a skid steer loader?

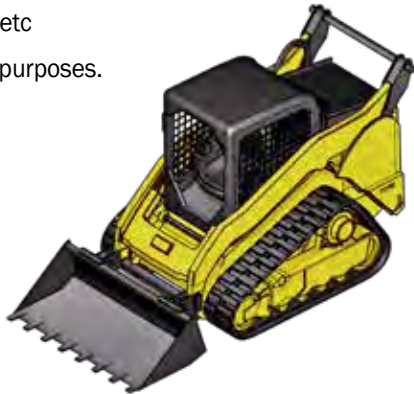
A skid steer loader is a self-propelled wheeled or tracked machine in which steering is accomplished by skidding or reversing the wheels or tracks on one side of the machine. It has an integral front-mounted bucket-supporting structure and linkage, which loads or excavates through forward motion of the machine, and lifts, transports and discharges material.

A skid steer loader is often called a **bobcat**. It is a small, rigid framed machine which is engine powered. It uses lift arms for tools and attachments. A skid steer loader can push material from one place to another, carry material in its bucket or load material into a truck or trailer.

The skid steer loader is small and agile. It can do zero-radius, pirouette (rotate) turns, which makes it very useful when you need to work in tight spaces. To steer it, you stop or reverse the track or wheels on one side of the machine.

What do you use a skid steer loader for?

- Agriculture – farming
- Construction
- Clean up
- Moving dirt/rocks etc
- Can use for lifting purposes.

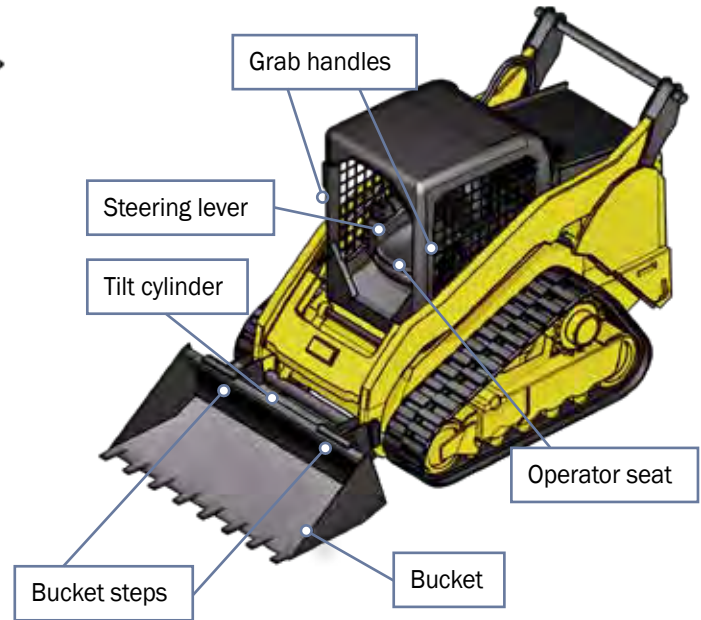
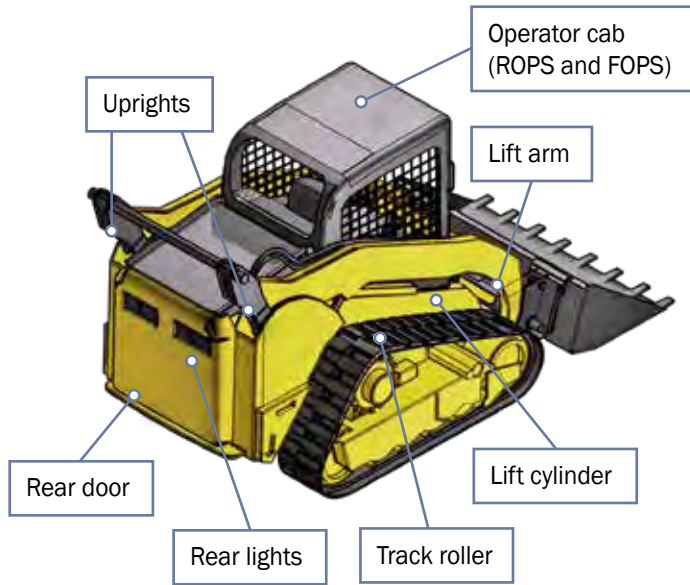


What industries do you use a skid steer loader in?

- Civil construction



An example of a skid steer loader



Identify and control hazards

Chapter 2



QUESTION 16

...CONTINUED FROM PREVIOUS PAGE

What does the safety plan tell you?

How to use tools, plant and equipment safely



Emergency procedures and exits



How to park safely and where to park



Control hazards and risks



Earthmoving site hazards

Checking for underground services

You should always check where services are **before** you start work.

You may phone '**Dial before you dig on 1100**'. You may look at the site plan or talk to your supervisor. You may need to look at the location of pits and meters to get an idea of where the services run. You may need to check with the local council or service company. You may even need to get underground detection equipment.

If you hit a service line, contact the provider immediately. You may need to organise to get the service disconnected while a qualified person fixes the problem.

You can sometimes tell there are services below by the types of ground. Some services are surrounded by a different type of soil, rock or sand.

You may notice that the soil is looser, or does not match the soil around where you are digging. There may be a line of tape alerting you to the services.

If you suspect there are services underground, stop working.

Check the ground. You may need to excavate the area by hand, or dig in another area.



QUESTION 29

You are operating a skid steer loader and it touches live powerlines.

What do you do?

Try to stay calm. **Stay in your seat if possible.**
Tell other people to keep away.



Try to lower the bucket away from the powerlines. Ask someone to get the power turned off.



In an emergency if you are alone or you think the machine might catch fire, **jump well clear** of the machine.



Never touch the ground and the machine at the same time – you may be **electrocuted** and killed.



...CONTINUES ON NEXT PAGE

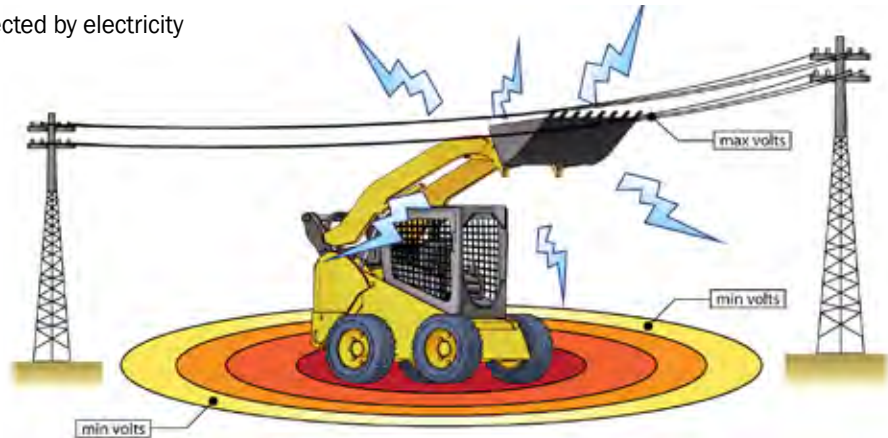
QUESTION 29

...CONTINUED FROM PREVIOUS PAGE

You are operating a skid steer loader and it touches live powerlines.

What do you do?

Area affected by electricity



Do not make contact with different ground areas at the same time.



Shuffle away keeping your feet closely together.

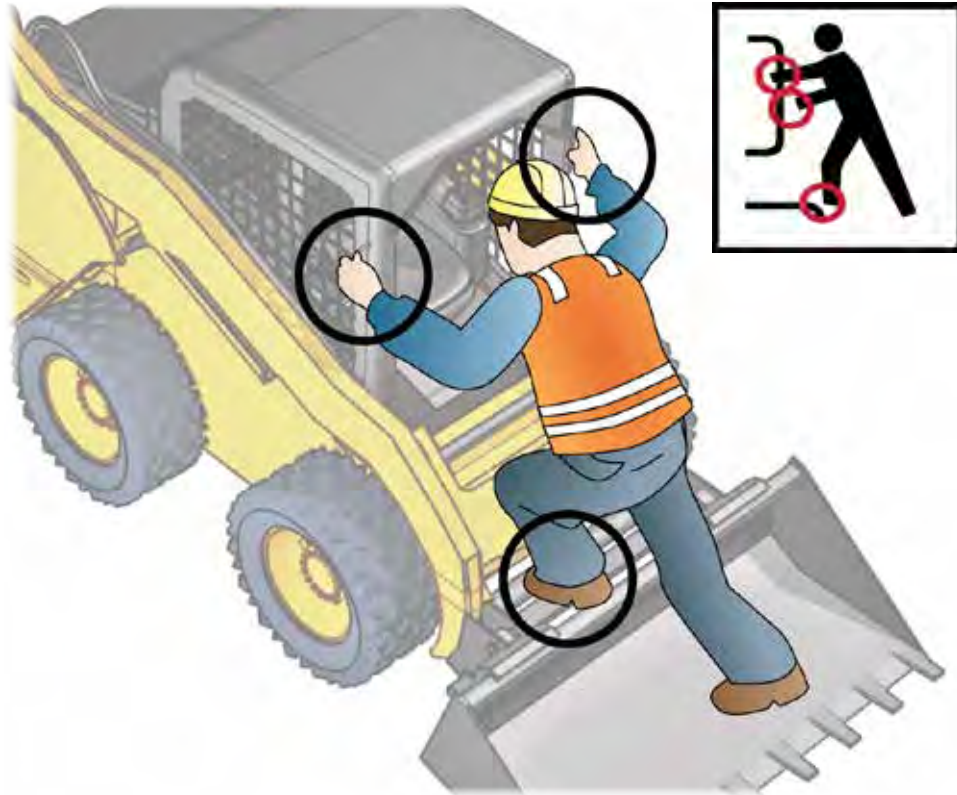


QUESTION 30

How do you safely get in and out of the skid steer loader's cabin?

Always use three (3) points of contact facing the machine.

For example, use two hands and one foot or two feet and one hand.



QUESTION 32

There is a trench near a pedestrian footpath.

How can you stop people falling into the trench?

Put up barricades, guard rails or fencing. Use signs to warn people of the danger.



QUESTION 33

Is it safe to refuel the engine while it's running?

No, the engine could cause the fuel to catch fire.



QUESTION 35

You should never lift people in the bucket.

Why?

Skid steers are not made to lift people. There is a risk of a person being injured in the bucket.



QUESTION 36

Which safety devices on a skid steer loader protect you from being crushed if it rolls over?

A roll over protective structure (ROPS), a seat belt and a pull down bar.

Always wear the seat belt and engage the pull down bar when using a skid steer loader.

**QUESTION 37**

You are using the skid steer loader for demolition work.

What extra protection do you need?

A falling object protective structure (FOPS).

