

LEARNER GUIDE



e-book



Self-propelled Compactor

TICKET

Training support material for:

RIIMPO316E

Conduct self-propelled compactor operations

Produced by:



Contents

Language – Literacy – Numeracy (LLN)	6
Acknowledgements	8
Introduction to self-propelled compactor	9
Basics of road construction	17
Element 1 Plan and prepare for self-propelled compactor operations	29
Element 2 Operate self-propelled compactor	91
Element 3 Relocate the self-propelled compactor	137
Element 4 Conduct housekeeping activities	145

Introduction to Self-propelled Compactor



Introduction to self-propelled compactor

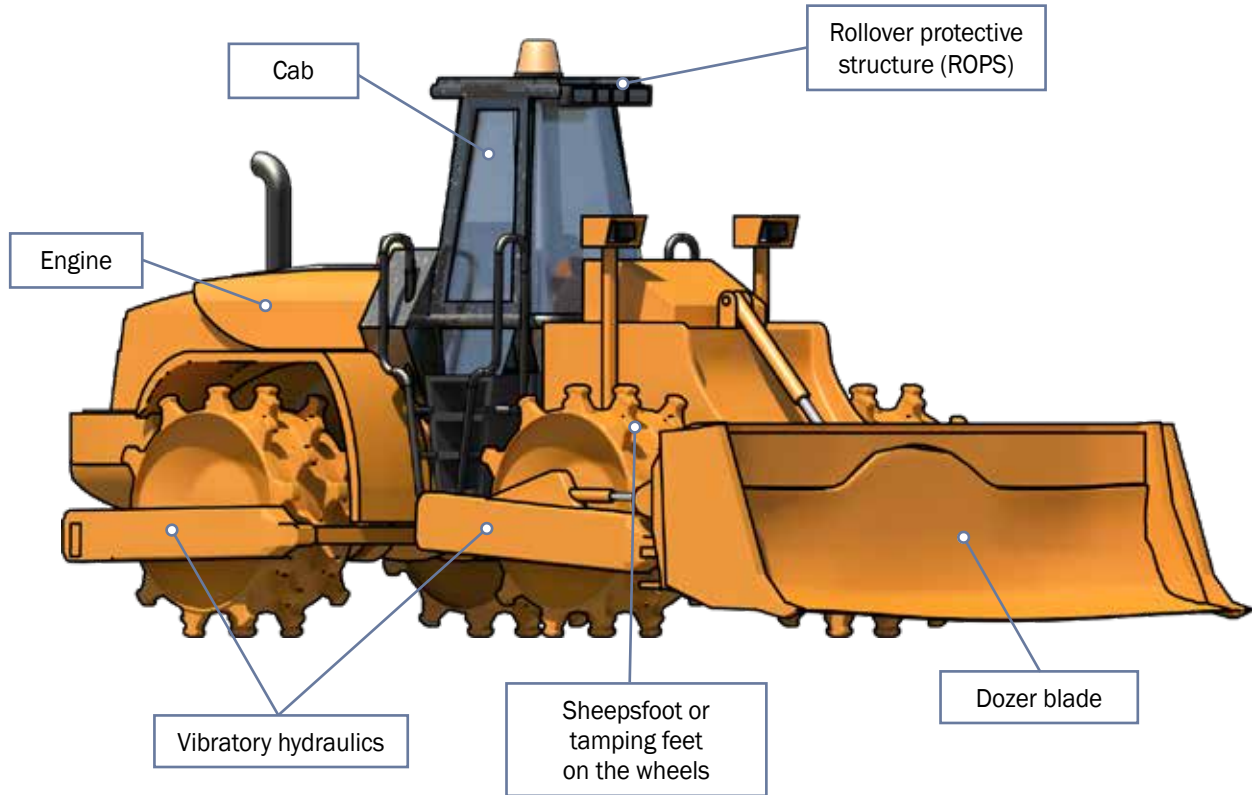
A self-propelled compactor is a self-propelled, tamping foot drum, wheeled machine, used to compact a variety of types of construction materials. It can operate at relatively high speeds and may have a dozer blade mounted on the front-end of the machine allowing for dozing, filling and compacting versatility. The tamping feet on the wheels of the machine may vary in size, shape and depth.

What industries do you use a self-propelled compactor in?

- Civil construction



An example of a self-propelled compactor



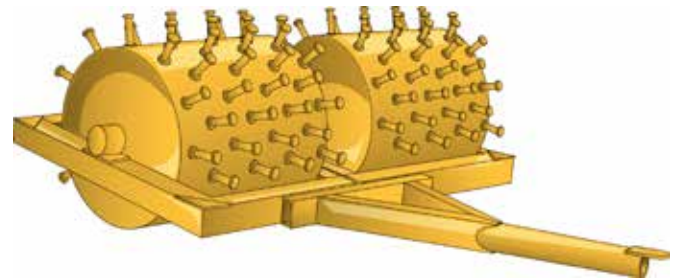
Self-propelled compactors

Four wheel (steel drum) articulated self-propelled compactor with dozer blade



Towed compactors

Single sheepfoot drum compactor



Operate self-propelled compactor

Element 2



QUESTION 61

How do you compact a surface using a self-propelled compactor?

- Start from the outer or lower edge and move towards the centre of the surface you want to compact



- Do a forward and reverse pass and overlap on each pass



- Turn the self-propelled compactor around
- Turn the vibrator off
- Go back in the opposite direction
- When the self-propelled compactor starts to walk out, the surface is properly compacted.

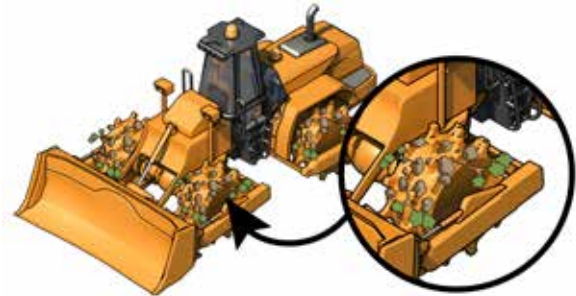


QUESTION 62

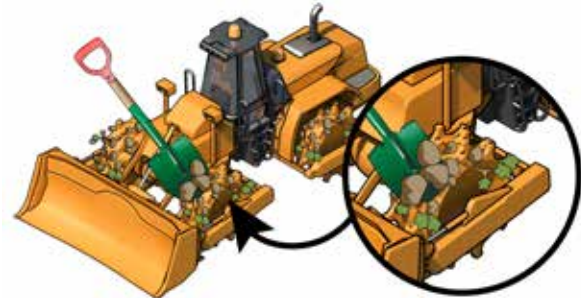
When using the compactor, contaminants will build up.

What should you do to identify and remove the contaminants?

1. Check the compactor.
Identify the contaminants.



2. Use hand tools to remove the main contaminants.



3. Use high pressure water to remove the remaining contaminants.

Make sure the work is done in an isolated area to prevent contamination of the worksite

