

# VEHICLE LOADING CRANE SAFETY AND LICENCE GUIDE

Training support material for:

**TLILIC0002**

**Licence to operate a  
vehicle loading crane**

**(capacity 10 metre tonnes and above)**



Produced by:



# CONTENTS

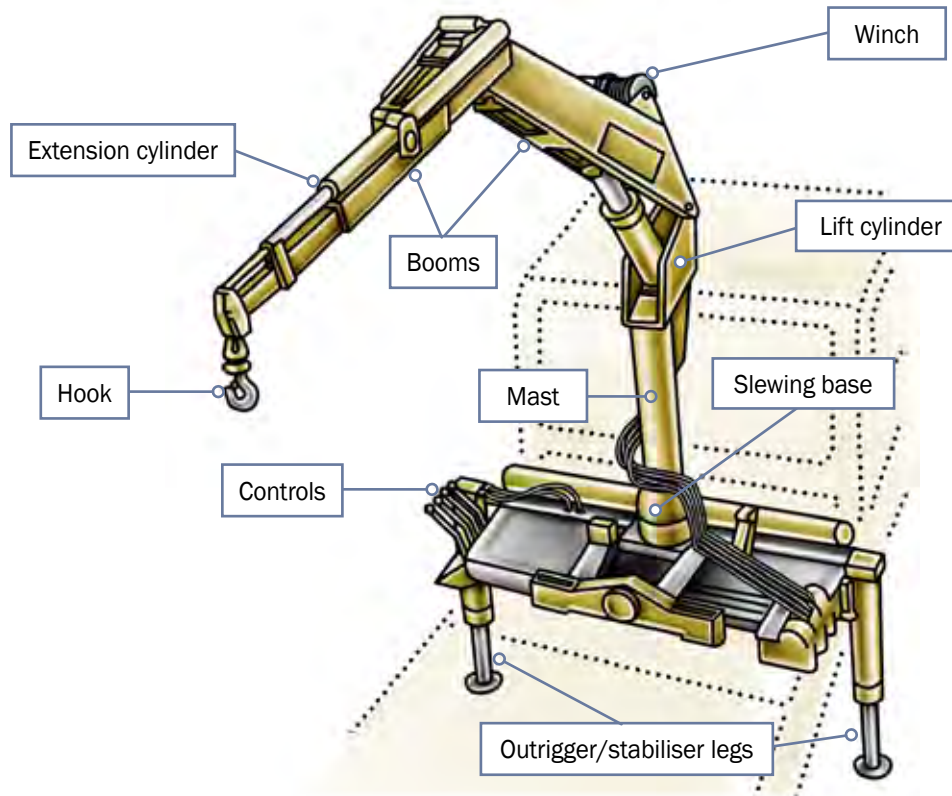
About this guide	4	
Acknowledgements	5	
Introduction to vehicle loading crane	7	
High risk licensing and the law	13	
Element 1	Plan work / task	17
Element 2	Prepare for work / task	81
Element 3	Perform work / task	137
	Introduction to crane charts	138
Element 4	Pack up	177

# INTRODUCTION TO VEHICLE LOADING CRANE



## What is a vehicle loading crane?

A vehicle loading crane is a crane which is mounted to a vehicle for loading and unloading. Vehicle loading cranes have hydraulic booms with power supplied from the vehicles engine through a PTO (power take off).



# PLAN WORK

## Element 1



## Ground conditions

### Choosing the set-up location

It is important to check the ground stability before starting to work. Check the ground to see if it is firm enough to support the crane and equipment. Check the ground is firm and level to keep the crane stable while you move or drive the load.

You should check the ground for recently filled trenches as the ground may be soft and the crane may sink when you use it.



Check that the crane can be set up level. Don't use the crane unless it is level. Also check that the boom can move through its full range of movement without hitting overhead electric power lines or other obstacles.



## Underground services

Cranes should **not** be set up over underground services. The crane may sink or tip over while it is moving the load or damage the services.

Look for backfilled trenches, manhole covers, inspection covers and drains when checking a worksite for hazards.

Beware of potential non-weight bearing surfaces.

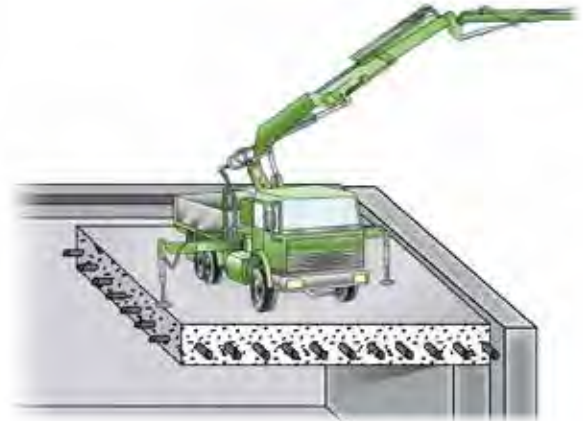


## Suspended floors/slabs

Check with an engineer and/or competent person if any suspended slabs can take the load of the crane plus material.

When setting up a crane on a suspended floor or temporary formwork you should consider the following:

- The floor is strong enough to take the weight of the crane and load
- Beware of single point loadings
- The age of the slab
- Whether back propping or shoring is needed on the floors underneath
- Written confirmation from a qualified engineer.



**QUESTION 11**

You are using a vehicle loading crane near uninsulated powerlines. Working near powerlines is **very** dangerous and can kill you.

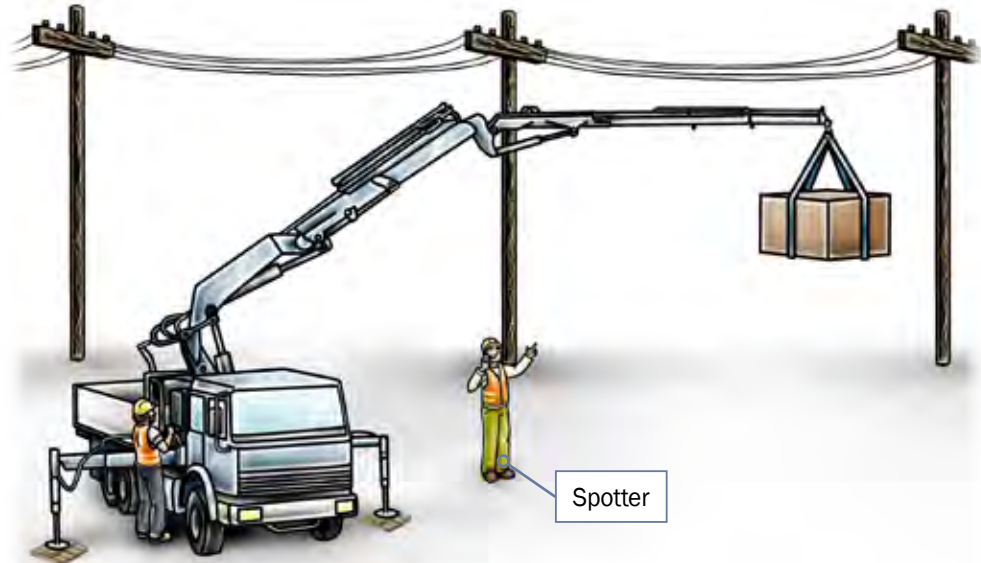
What are the minimum safe approach distance rules you **must** follow?

Approach distance is the minimum distance any part of the crane can go near live powerlines. The minimum safe distance rules you must follow can be different for each state/territory. For example, only some use spotters.

A **spotter** is someone who helps you work closer to powerlines [Check if this is allowed in your state/territory].

**Uninsulated** means the powerlines have no cover. If you touch them you could be hurt or killed.

Most states and territories use Australian Standard AS [See next page/slide.]





**QUESTION 16**

How can you warn, control and protect other people or workers on site?

