

LEARNER GUIDE

Backhoe/Loader

Training support material for:

RIIMPO319E

Conduct backhoe/loader operations



Produced by:



Contents

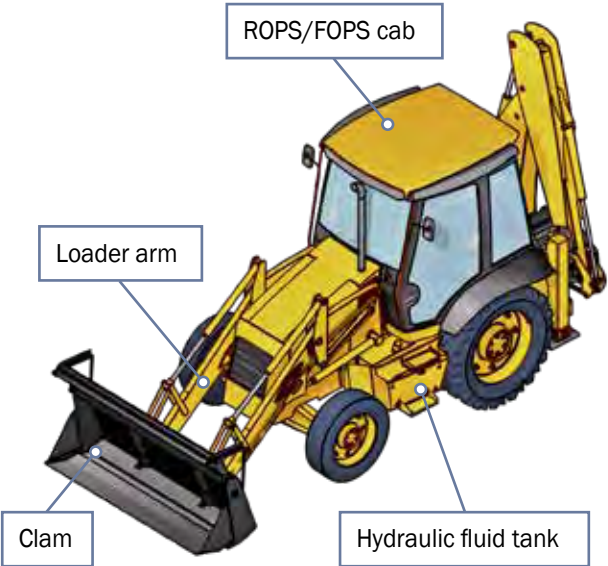
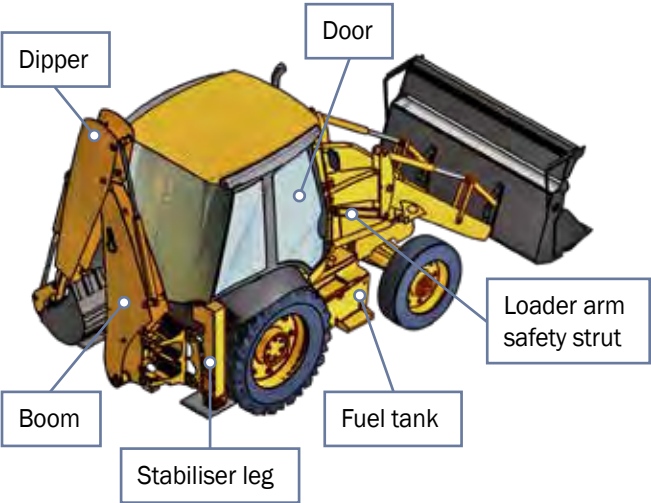
Acknowledgements	4
Introduction to backhoe/loader	5
General information	11
Element 1 Plan and prepare for backhoe/loader operations	55
Element 2 Operate the backhoe/loader in line with established requirements	77
Element 3 Load, carry and place materials to complete work activity	135
Element 4 Select, remove and fit attachment for a backhoe/loader	169
Element 5 Relocate the backhoe/loader	183
Element 6 Conduct housekeeping activities	197

Introduction to backhoe/loader



What is a backhoe/loader?

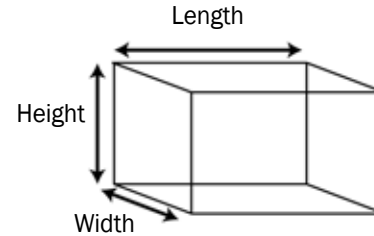
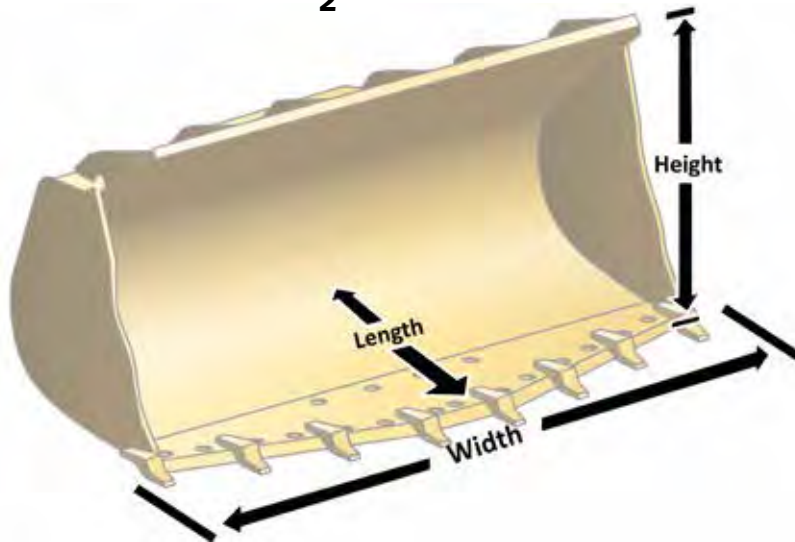
A backhoe/loader is a machine with a front bucket and also a rear boom and attachment. You can use a backhoe/loader as a lifting machine if the boom has a proper lifting lug and safe working load (SWL).



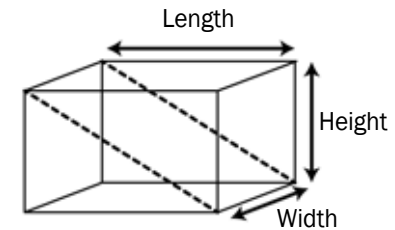
Calculations (continued)

How to find the cubic capacity of a bucket

$$\text{Capacity} = \frac{L \times W \times H}{2}$$



Cubic capacity of cube
= $L \times W \times H$



Cubic capacity of bucket
= $L \times W \times H \div 2$

Cubic capacity is $\div 2$ because of the shape of the bucket (a triangular prism)

Operate the backhoe/loader in line with established requirements

Element 2



QUESTION 24

When do you test and inspect the backhoe/loader?

Every day. Always test and inspect before and after you use the backhoe/loader. You do this to make sure it's safe to use. Always follow workplace procedures for inspecting plant and equipment.



QUESTION 25

What pre-operational checks do you do before using the backhoe/loader?

Checks may include:

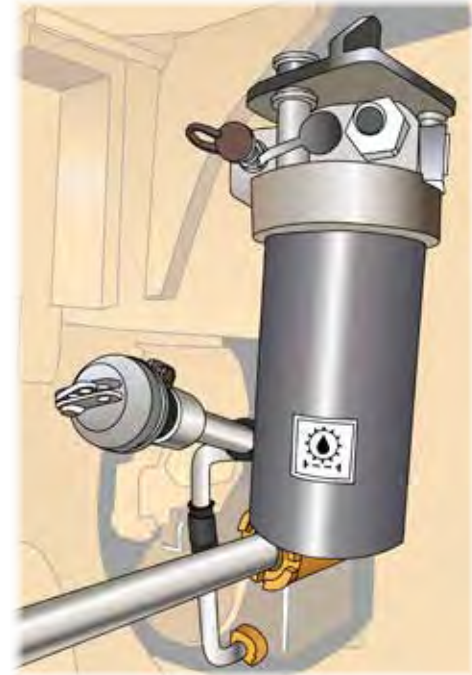
Look for leaks under the machine



Check tyre condition, tyre pressure and wheel nuts.



Check transmission oil

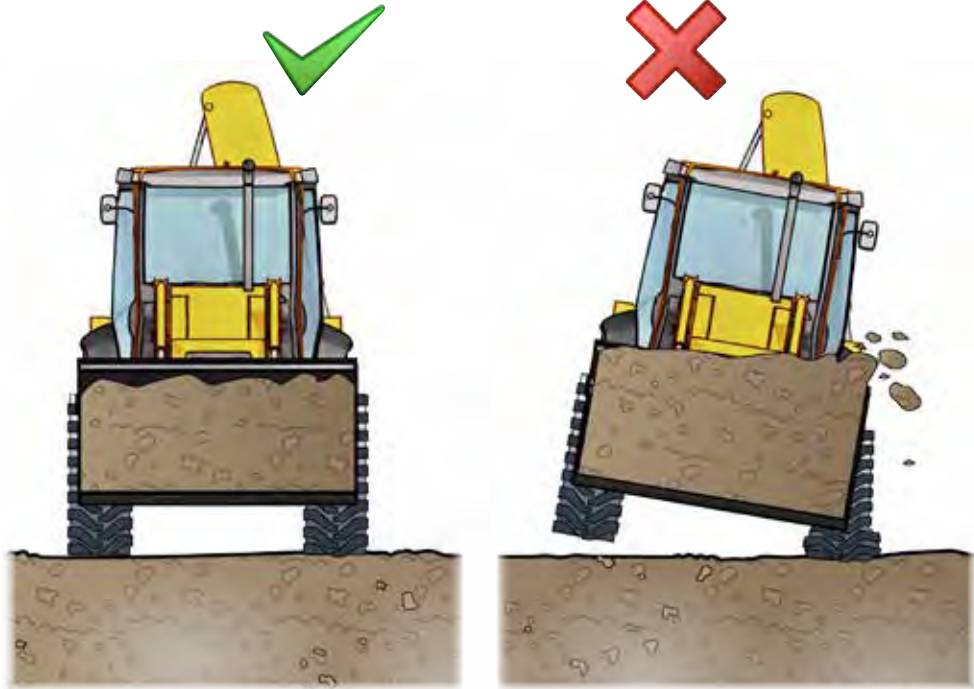


...CONTINUES ON NEXT PAGE

QUESTION 34

Why do the tyres on a backhoe/loader need to be equal pressure?

If the tyres are not equal pressure, the backhoe/loader could tip over sideways and injure you or someone else.



QUESTION 46

You will work in a hazardous area, for example, a confined space. What type of permit might you need to get?

You may need to get a hazardous work permit.



Powerlines

Sometimes you will work near uninsulated powerlines. Working near powerlines is **very dangerous** and can kill you.

There are important rules you must follow – and the rules maybe different in your state/territory.

In some states/territories you may be able to use a spotter and work closer to powerlines.

