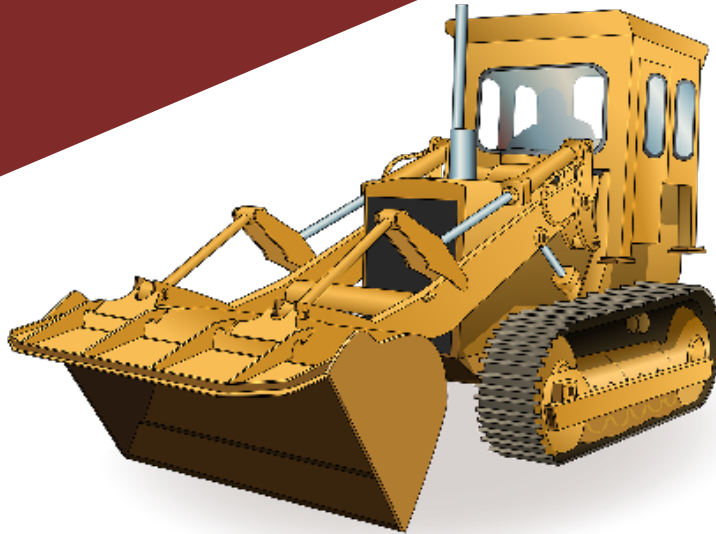


LEARNER GUIDE



Tracked Front End Loader TICKET

Training support material for:

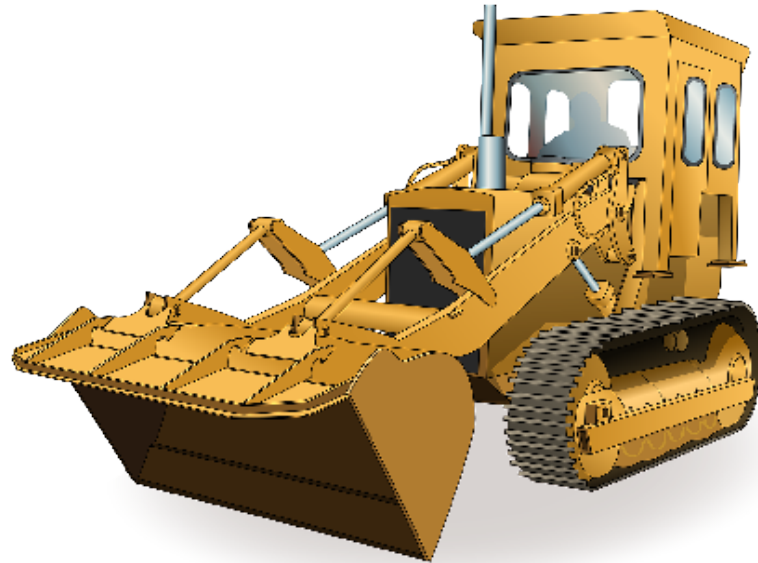
RIIMPO322F (Tracked)

Conduct civil construction tracked
front end loader operations

Produced by:



Introduction to Tracked Front End Loaders



What do you use a front end loader for?

- Agriculture – farming
- Construction
- Clean up
- Moving dirt/rocks etc
- Can use for lifting purposes



What industries do you use a front end loader in?

- Civil construction



- Mining

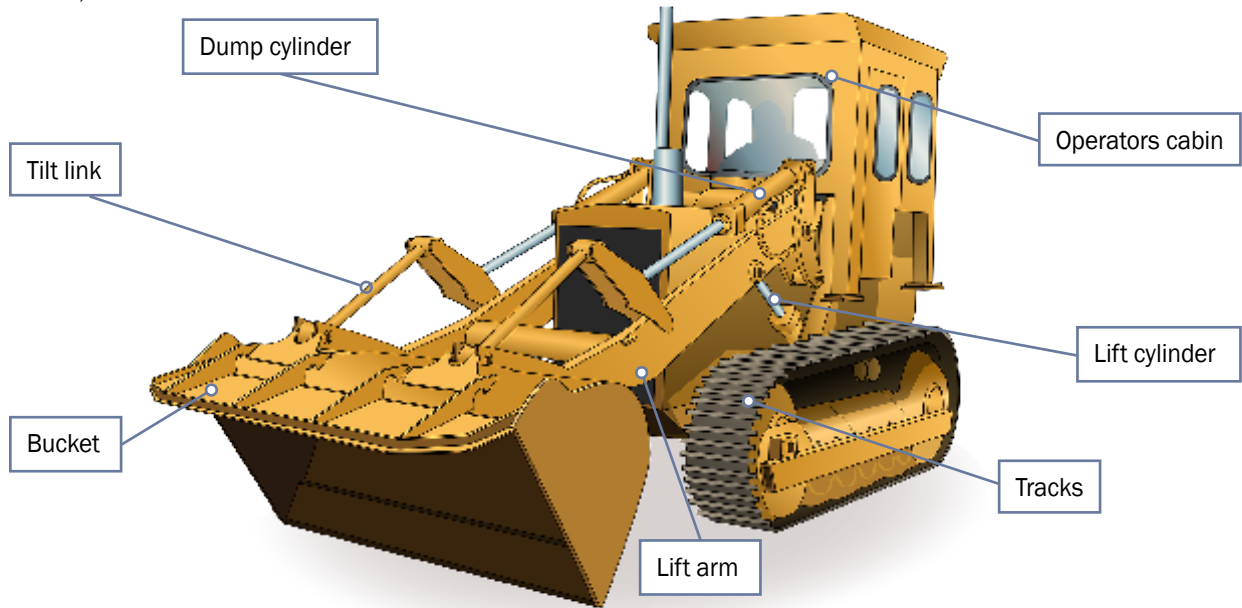


An example of a tracked front end loader

A tracked front-end loader is a type of machine that has a front mounted square wide bucket connected to the end of two booms (arms) to scoop up loose material such as dirt, sand or gravel and move it from one place to another without pushing the material across the ground.

A tracked front end loader is commonly used to move material from ground level and deposit it into an awaiting dump truck, stockpile or into an open trench excavation.

Front end loaders also come in wheeled models (refer RIIMP0321D Conduct civil construction wheeled front end loader operations).



Safety plan (continued)

Site evacuation plan – Example



Exit



Fire extinguisher



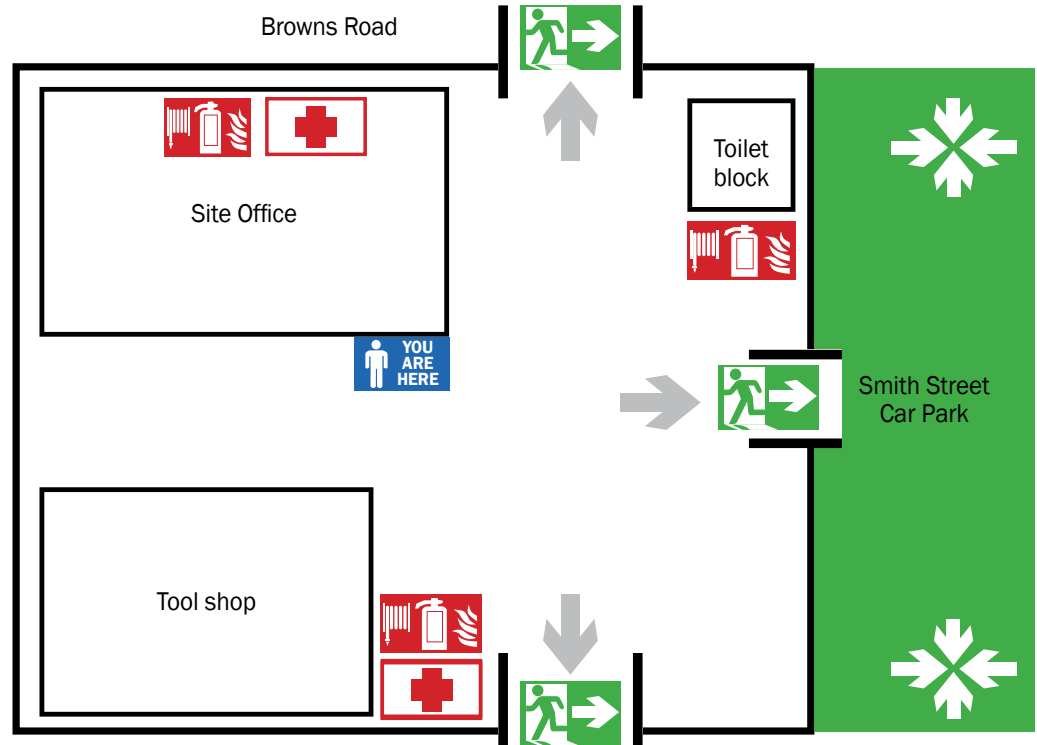
First Aid



You are here



Assembly Area



Tools and equipment

Here are some typical tools and equipment you might need.

Personal protective equipment (PPE)

- Steel cap boots
- High visibility safety vest
- Hearing protection
- Hard hat
- Goggles/glasses
- Gloves
- Dust mask
- Sunscreen



Hand tools

- Shovel and levels
- Socket sets
- Screwdrivers or wrenches
- Wire brush
- Spanners



QUESTION 19

What does the traffic management plan (TMP) tell you?

It tells you how to control vehicles in and around the worksite. It helps keep the site safe for you and others.

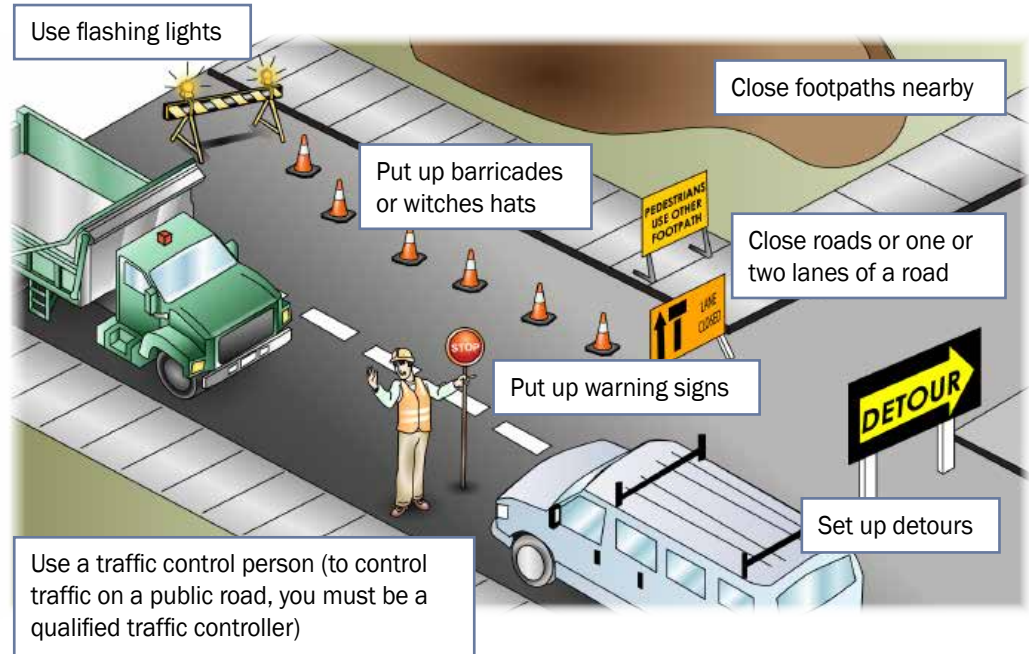
You may require a traffic control licence in your state or territory.



QUESTION 20

What can you do to control traffic in and around a worksite?

You can:



QUESTION 21

Where do you put up warning signs?

Near underground services



Near dangerous places



In places you need to control traffic



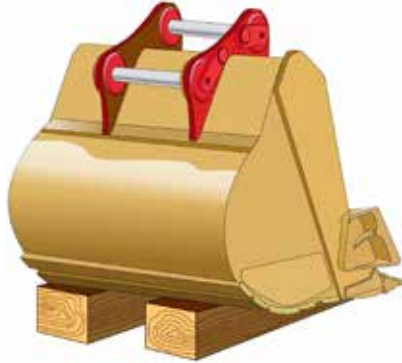
On the site fencing



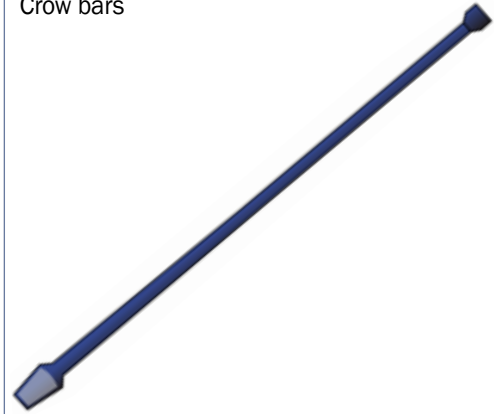
QUESTION 22

What kinds of tools and equipment might you use when doing earthmoving work?

Chocks, blocks or safety bars to stop the bucket dropping



Crow bars



Hand tools such as spanners, ratchets, wrenches, screwdrivers, hammers



Socket set



...CONTINUES ON NEXT PAGE