

LEARNER GUIDE



Articulated Haul Truck

TICKET



Training support material for:

RIIMPO337E

Conduct articulated
haul truck operations

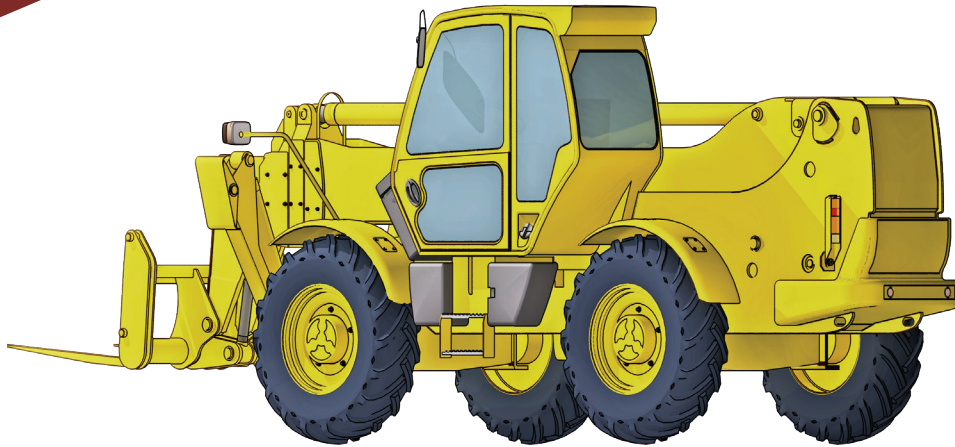
Produced by:



Contents

How to use this guide	4
Language – Literacy – Numeracy (LLN)	6
Acknowledgements	8
Introduction to articulated haul trucks	9
The basics of road construction	13
Chapter 1 Plan and prepare for articulated haul truck operations	25
Chapter 2 Operate articulated haul truck	97
Chapter 3 Load, haul and dump materials	141
Chapter 4 Carry out housekeeping activities	151

Introduction to Articulated Haul Truck

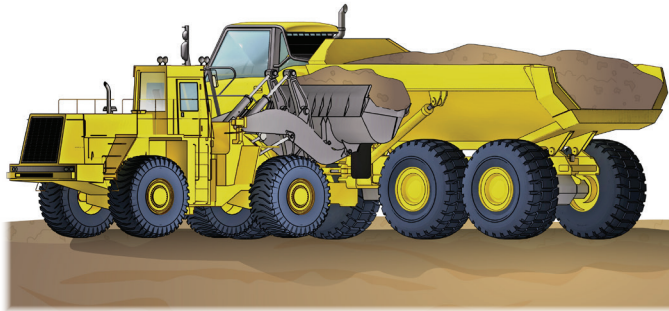
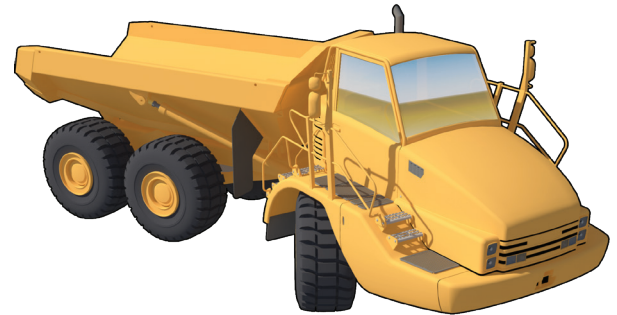


Introduction to articulated haul truck

An **articulated haul truck** is a large heavy duty type of haul truck used to transport loads over rough terrain and carry materials from one place to another.

The haul truck is built to handle rough slopes and slippery conditions. It has four-wheel or all-wheel drive and the truck steers by the cab and front axle pivoting separate from the load body and rear wheels. For example, to steer to the right, the engine, cab and front axle would pivot to the right.

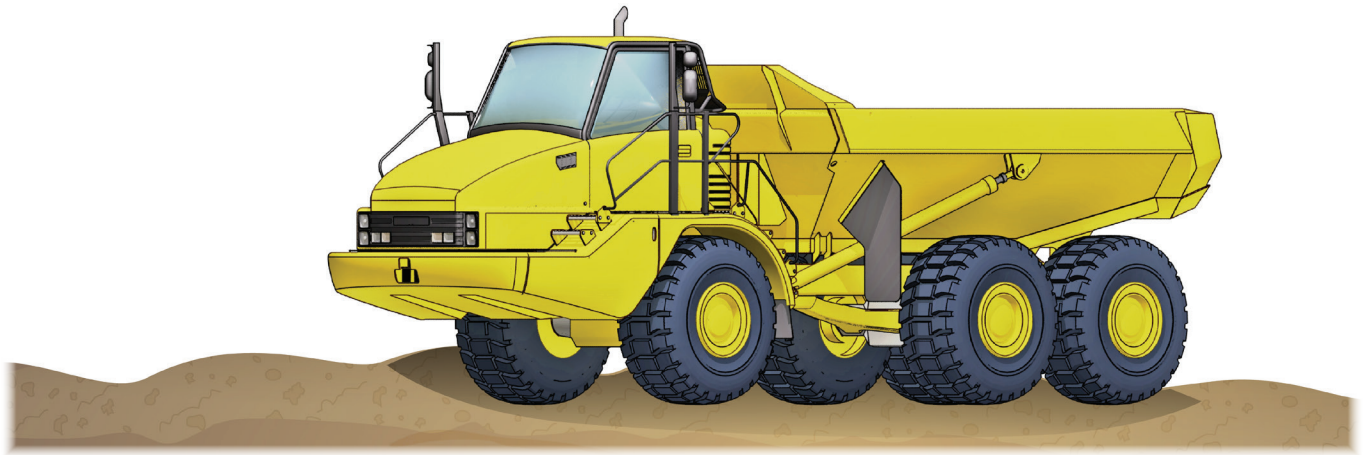
You can load a haul truck with a number of machines including excavators and loaders.



Articulated haul trucks covered in this guide are **off-highway** trucks and **diesel-powered mechanical drive**.

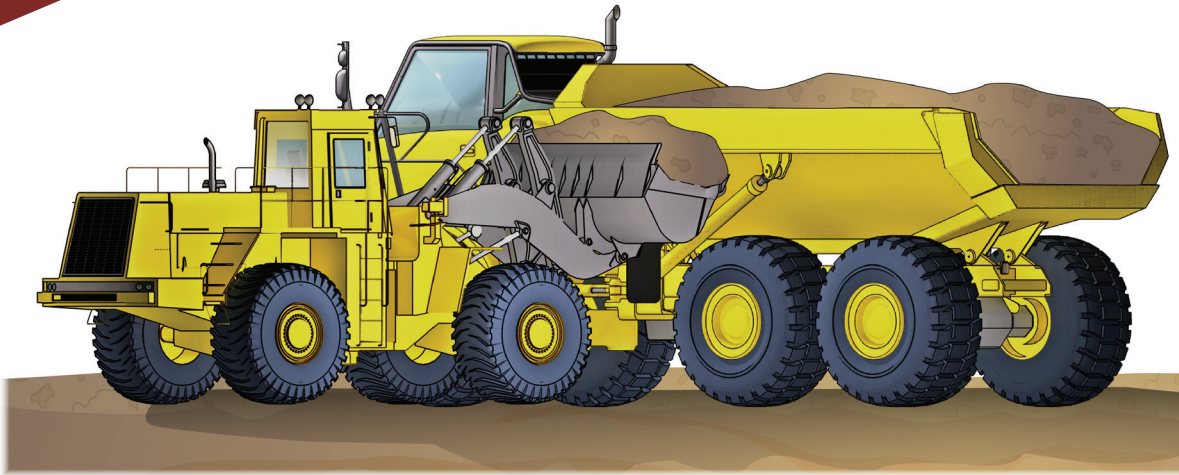
What industries do you use an articulated haul truck in?

- Civil construction
- Coal mining
- Extractive industries
- Metalliferous mining



Operate articulated haul truck

Chapter 2



QUESTION 60

What is the correct way to enter or leave the machine cab?

Always use 3 points of contact.

For example:
Keep **2 hands** and **1 foot**,
or **2 feet** and **1 hand**
in contact with the machine
at all times.



**3 point contact
(both hands and foot)**



Load, haul and dump materials

Chapter 3



QUESTION 91

What kinds of loading equipment might be used to load a haul truck?

A haul truck may be loaded with:

Excavators



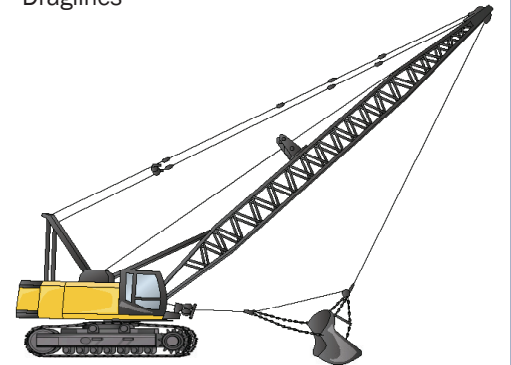
Loaders



Face shovels



Draglines



QUESTION 92

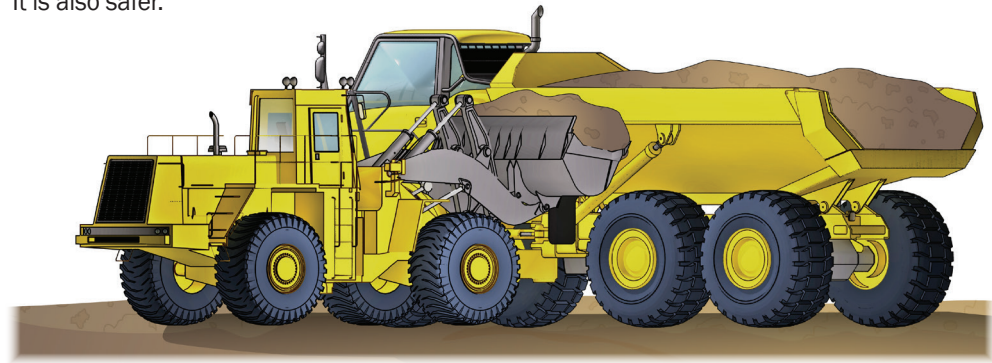
Why should you stay in the haul truck's cabin while it's being loaded?

You must stay in the cabin so the person loading the truck knows where you are. If you stand outside the truck, you could be hit and injured if the load spills on to you, or you could be hit by the loading machine.

**QUESTION 93**

Why is it important to position the haul truck as directed by the loader for loading?

So the loading equipment can load the haul truck as quickly as possible. It is also safer.

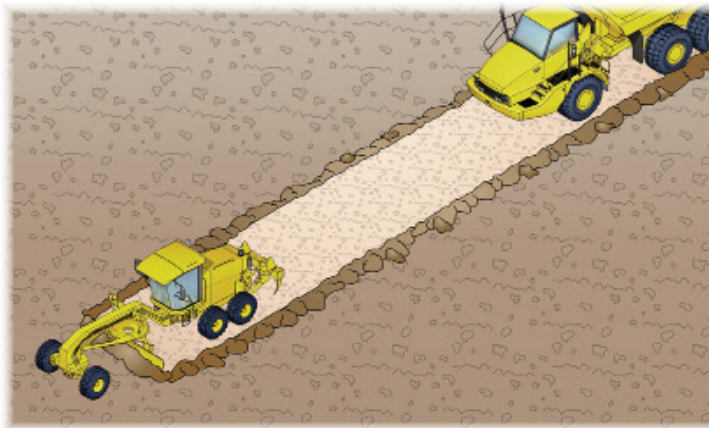


QUESTION 94

You need to haul a load but the route is rough, pot holed or has deep wheel grooves.

What do you do?

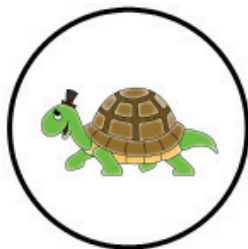
Ask a dozer or grader operator to level the surface for you.

**QUESTION 95**

You are driving the haul truck on a rough surface.

What do you have to do?

Drive the haul truck slower. This means you can't haul as much material in a shift. You should try to use the haul truck on a level surface.

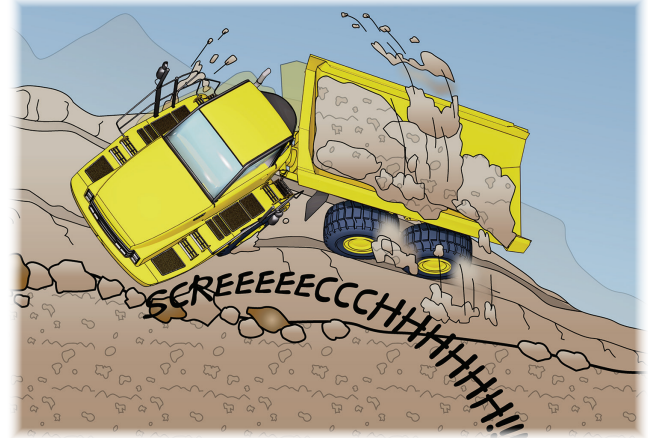


QUESTION 96

Why do you need to be careful using an articulated haul truck on a slope?

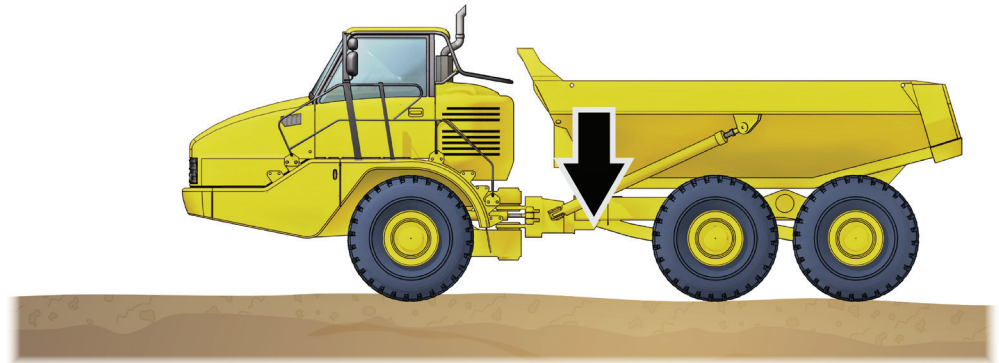
The truck might tip over.

Articulated trucks are not as evenly balanced as rigid trucks when turning.

**QUESTION 97**

Why do you lower the dump body before you travel?

Because the truck is more stable with the dump body lowered.



QUESTION 98

You're using an articulated haul truck on a slope and hauling a load.

Why should you avoid braking hard on the slope?

You could tip over or roll the haul truck.

**QUESTION 99**

Why should you obey the spotter's directions when dumping a load?

The spotter can see what's behind the truck better than you.



QUESTION 100

You're dumping a load over a bank.

What can help you do this more safely?

Answer may include:

