

REACH STACKER

Learner Workbook (Formative assessment)

Student copy

TLILIC0011 –

Licence to operate a reach stacker (greater than 3 tonnes capacity)



This resource was developed by



Table of Contents

Contact Details	2
Training support materials	4
Unit Description.....	4
Formative Knowledge Assessment	4
Knowledge Assessment Instructions.....	4
Performance Evidence	Error! Bookmark not defined.
Score for assessments.....	Error! Bookmark not defined.

1. Plan work / task



Question 1 (PC 1.1)

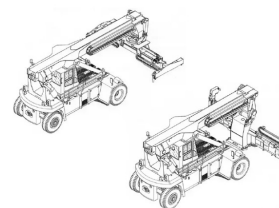
1. What is a reach stacker?



Question 2 (PC 1.1)

Name 4 places you can find information about a reach stacker?

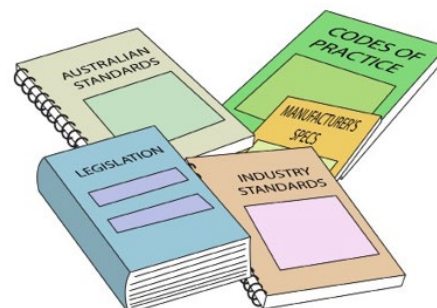
OPERATION AND
MAINTENANCE MANUAL



REACH STACKER

Question 3 (PC 1.1)

Name 4 documents where you might find workplace information?



Question 4 (PC 1.1)

What duties do you have as a worker? List two.



Question 5 (PC 1.1)

What action can a work health and safety regulator can take if you fail to work safely when using your licence to do high risk work? List two (2).



Question 6 (PC 1.1)

What duties does an employer have to make sure of the health and safety of a worker? List two (2).



Question 7 (PC 1.1)

You have your reach stacker licence but are asked to operate an unfamiliar machine. What should your employer provide? List two (2).



Question 8 (PC 1.1)

What are some of the things you should know about the job / task before you start? List two (2).

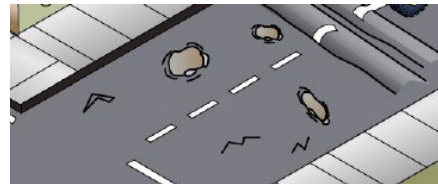


Question 9 (PC 1.2)

Why is it important to inspect the operating surface before you start? List two (2) reasons.

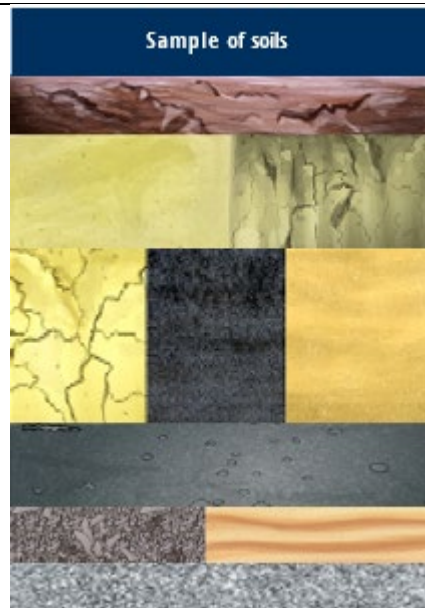
Answer may include but is not limited to:

- So you can identify any hazards that exist
- To determine the suitability of the surface
- So you can find out the best path for driving the reach stacker and moving and placing loads.



Question 10 (PC 1.2)

Name three (3) types of ground types preferred for operating a reach stacker.



Question 11 (PC 1.3)

What is maximum rated capacity (MRC)?



Question 12 (PC 1.3)

What is working load limit (WLL)?



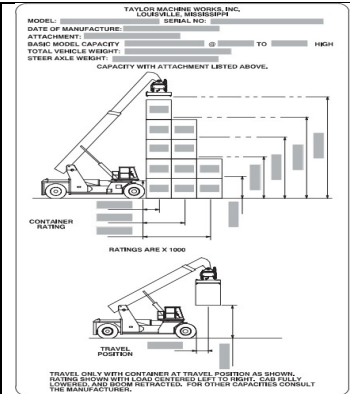
Question 13 (PC 1.3)

What is dynamic loading?



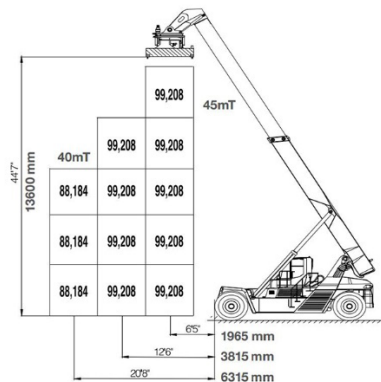
Question 14 (PC 1.3)

What information can you get from the data plate? List two (2).



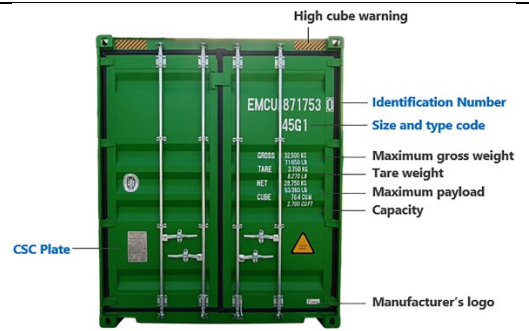
Question 15 (PC 1.3, 3.1)

What things should you keep in mind when reading a load chart? List three (3).



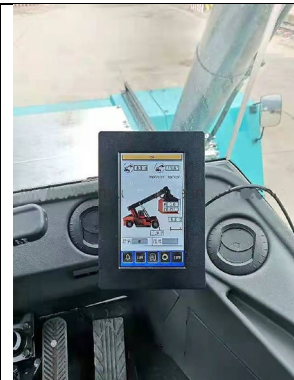
Question 16 (PC 1.3)

What does the data plate on a shipping container tell you?



Question 17 (PC 1.3)

What information will the load computer / weight scale give you? List two (2).



Question 18 (PC 1.4)

What should you consider when planning the path you will travel? List three (3).



Question 19 (PC 1.5)

What is a hazard?



Question 20 (PC 1.5)

What is a risk?

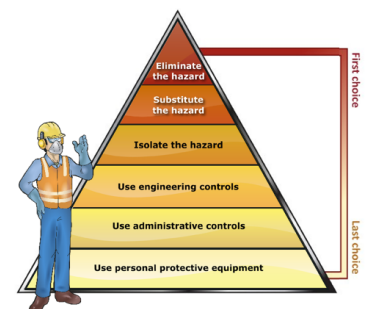


Question 21 (PC 1.5)

What are some hazards you should look out for? List three (3).

Question 22 (PC 1.5)

What is the Hierarchy of Hazard Control?



Question 23 (PC 1.5)
List the six (6) levels of the Hierarchy of Hazard Control from the FIRST CHOICE to the LAST CHOICE.

1.
 2.
 3.
 4.
 5.
 6.

Every Saturday I Eat a Pie

Question 24 (PC 1.5)
What are some hazard control measures when using a reach stacker? List three (3).

Question 25 (PC 1.5)
Sometimes you might be allowed to work closer to powerlines than the minimum distances (NO GO ZONES). To do this what would you need to do?

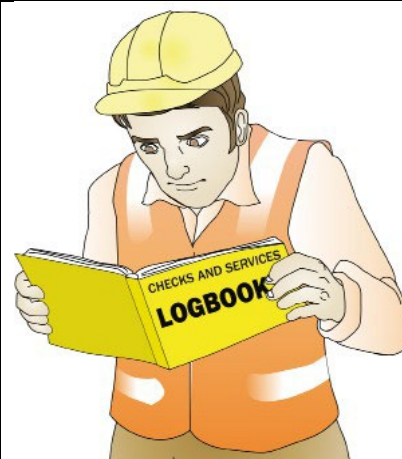
Question 40 (PC 2.7)

What should make sure of when checking on the stability of the reach stacker?



Question 41 (PC 2.8)

What should you check the logbook for? List three (3) items.



Question 42 (PC 2.9)

What are some weather and environmental conditions that can affect the operation of a reach stacker? List two (2).



Question 43 (PC 2.1)

What should you consider when stacking containers? List two (2).



Question 44 (PC 2.10)

Can you lift loads over people?



Question 45 (PC 2.10)

What should you do if working at night or in a darkened area?

