

WHEELED FRONT END LOADER

Learner Workbook



Student Copy

RIIMPO321F –

Conduct civil construction wheeled front end loader operations



Learner Name: _____

Student Number: _____ Date: _____

This resource was developed by:



Version 1.1 – January 2023



Contact Details

Candidate's details
Name:
Address:
Student Number:
Phone number:
Email:
I.D supplied / USI No ?
Signature:

Trainer/Assessor's / Supervisor details
Name:
Company/registered training organisation:
Phone number:
Email:
Assessment location:
Assessment date:
Signature:

I declare that:

Student Signature: Date:	This submission is all my own work and has not been copied nor does it violate the material that is listed under the Statement on Plagiarism and Academic Integrity rules, except for any collaboration that has been authorized by my tutor as group work.
---	---

Contents

Contact Details	2
Training support materials	4
Application / Context of Assessment	4
Assessment Conditions	4
Summary of Practical tasks to be performed	6
Equipment description	8
Assessor’s qualifications and assessment conditions	8
Assessment Guidelines	8
Determining competency	9
Right of appeal	10
Knowledge Assessment	11
Knowledge Assessment Instructions	11
Score for knowledge assessment	58
Practical Assessment	59
Practical assessment instructions	59
Summary of practical assessment task.	61
What to do for practical task demonstration.	61
Task that can be performed over time – broken up in parts.....	61
Description of work order / Job (requirements)	62
Written / Practical Assessment Summary – Competency Sign Off	63

Training support materials

Training package: Resources and Infrastructure Industry Training Package

Unit of competency: RIIMPO321F - Conduct civil construction wheeled front end loader operations

Application / Context of Assessment

This unit describes the skills and knowledge required to conduct wheeled front end loader operations.

This unit applies to those working in site based roles.

Where equipment being assessed requires the fitting and removal of attachments to be demonstrated an integrated tool carrier unit should be used.

Licensing, legislative, regulatory and certification requirements that apply to this unit can vary between states, territories, and industry sectors, and must be sourced from state jurisdictions prior to applying this unit.

This unit alone does not provide sufficient skill to independently load and unload equipment. To perform this activity safely, personnel must either complete or be assisting someone who has completed RIIHAN308F Load and unload plant or equivalent.

Notes to Candidate:

There are 2 components to this assessment, a **practical** and **written assessment**.

Candidate must at the end of completing this work book, submit all files for assessment and written evidence of questions answered, filled in and signed by the assessor.

Practical components of this assessment must be filmed on wheeled front end loader operations that safely, effectively and efficiently follows workplace procedures to carry out work activity on at least two occasions, along with handling at least two different material types.

Assessment Conditions

Mandatory conditions for assessment of this unit are stipulated below. The assessment must:

Include access to:

- wheeled front end loader
- materials to be shifted
- personal protective equipment
- be conducted in a safe environment; and,
- be assessed in context of this sector's work environment; and,
- be assessed in compliance with relevant legislation/regulation and using policies, procedures, processes and operational manuals directly related to the industry sector for which it is being assessed; and,

- confirm consistent performance can be applied in a range of relevant workplace circumstances

Where personal safety or environmental damage are limiting factors, assessment may occur in a simulated work environment* provided it is realistic and sufficiently rigorous to cover all aspects of this sector's workplace performance, including environment, task skills, task management skills, contingency management skills and job role environment skills.

Summary of Practical tasks to be performed.

You are to demonstrate the ability to:

- Operate a Font end loader,
- By lifting,
- carrying and,
- spreading materials,
- Safely, effectively and efficiently following workplace procedures to carry out work activity on at least **two occasions**.

You are to submit 2 work orders to candidate, to follow, which outlines work to be performed for at least **2 different material types** such as the following:

- mixing materials
- stripping/spreading materials
- loading, cutting/boxing
- backfilling

or working with top soil, dirt, clay, rock or crusted rock.

Including:

- assisting with loading and unloading wheeled front end loader from float/trailer

Attachments that can be used are the following:

- Loader with lifting lug

An example of a work order / job (requirements) might be the following;

Example 1 / Work Order 1. * Dig out an area for reconstruction, for a new road to be laid and once pipes have been laid for the new road, back fill any dirt to cover sewerage pipes. If any excess dirt is left then dump dirt onto the back of a tip / truck.

Example 2 / Work Order 2. * Remove Top Soil from a site to prepare for crushed rock to be placed down for a country estate drive way. Move Crushed rock from front of house, from a stock pile, to country estate drive way. Flatten the crushed rock of the country estate drive way. Also carry loads of mixing soil bags from front of site to back of house for workers to use to mix concrete.

Resources required for Sample Work Order 1 & 2.

- A **front end** loader.
- 2 Copy's of a work order
- A **site** for traveling with material
- Dump truck** to dump excess dirt material.
- A **site** with top soil with Grass.
- Stock **pile** of Gravel.
- At least 20 bags of concrete mixing material for transport.
- A lifting attachment so that pipe can be lifted and slung.

Sample Statement of what the assessor should speak to candidate about on how to perform task.

Ask the candidate to perform the **pre-start** requirements, when complete they should **drive** the front end loader to an area where they can **operate** it to **lift and carry materials** to pre-determined **specifications** and **spread** the material. The candidate could then **backfill** and compact a pre-dug trench. Now the candidate will be required to complete any **housekeeping** requirements then **prepare the excavator for relocation** and **assist in loading the excavator** onto a float or trailer. If the scenario above was completed twice it should meet the requirements as long as two different material types are used.

Equipment description

References to a machine or machines in these practical tasks means a wheeled type front end loader (except where the task specifies the machine type).



A wheeled front end loader is a self-propelled wheeled machine with an integral front-mounted bucket-supporting structure and linkage with integral quick coupler, which loads or excavates through forward motion of the machine, and lifts, transports and discharges material.

Assessor's qualifications and assessment conditions

To conduct valid assessments for this qualification the assessor must meet the assessor requirements outlined in the assessment conditions.

The assessment conditions and assessor requirements for this unit of competency can be viewed at www.training.gov.au/Home/Tga and are also outlined in the mapping document prepared by Easy Guides.

Assessors should access the assessment conditions prior to undertaking assessments. The assessment conditions and the assessor requirements form part of the assessment tool.

Please note: Units of Competency and Assessment Requirements change frequently; it is the Assessor's responsibility to ensure they meet the criteria for the assessment to be valid.

Assessment Guidelines

This assessment is designed to be used with the learning materials developed by Easy Guides Australia. The assessor must be satisfied the applicant has successfully demonstrated each aspect of the Unit of Competency. The answers provided are model answers only. The written assessment determines the candidate's underpinning knowledge.

This assessment can be customised to suit your requirements. When customising this assessment, you must ensure all performance criteria and knowledge evidence are addressed to maintain the integrity of the assessment.

Reasonable adjustments to assessments should be made to accommodate candidates with special needs.

Where ever a practical task is demonstrated it should be filmed and document in the assessment sheet of the file name, location of file store and to whom the assessment video is associated to.

Determining competency

Evidence from the knowledge assessment together with evidence from the practical assessment should be used by the assessor to determine the candidate's competency.

Practical Assessment Check list.

Assessor is to observe candidate performing task and once task criteria has been observed for / on two occasions e.g., Job 1, Job 2, then can the assessor mark yes / no to indicate candidate has satisfactory meet that performance criteria. Further details of what needs to be performed is outlined in each sub category for the performance criteria, which is in the far left hand corner.

Please tick each sub category once task has been performed, and mark off on what job occurrence it has been performed i.e. Job 1, Job 2.

Sample On how to fill out Practical assessment Check List.

Observation performed when performing Practical Task 1 from work order provided (Job 1, Job 2)	Yes	No	N/A	Job 1	Job 2
Candidate:					
Located and apply relevant documentation, policies and procedures.	<input type="checkbox"/>	<input type="checkbox"/>	<input type="checkbox"/>		
<input type="checkbox"/> Locates operator's manual for wheeled front end loader and finds requirements for pre-start and start-up checks.				<input type="checkbox"/>	<input type="checkbox"/>
<input checked="" type="checkbox"/> Locates site policies and procedures for personal protective equipment requirements when operating wheeled front end loader.				<input type="checkbox"/>	<input type="checkbox"/>
Selected and wear personal protective equipment.	<input type="checkbox"/>	<input type="checkbox"/>	<input type="checkbox"/>		
<input checked="" type="checkbox"/> PPE selected must be as per site policies and relevant to the task. As a minimum MUST include appropriate footwear, Hi-visibility workwear and hard hat.				<input checked="" type="checkbox"/>	<input type="checkbox"/>
<input type="checkbox"/> PPE must be checked for serviceability and correctly fitted.				<input type="checkbox"/>	<input type="checkbox"/>
Conducted pre-start inspection of wheeled front end loader.	<input checked="" type="checkbox"/>	<input type="checkbox"/>	<input type="checkbox"/>		
<input checked="" type="checkbox"/> Pre-start check is carried out as per operators manual and workplace policies and procedures. Where possible a completed pre-start checklist should be provided as supporting evidence.				<input checked="" type="checkbox"/>	<input checked="" type="checkbox"/>
<input checked="" type="checkbox"/> During inspection the candidate must identify and/or verbalise any common faults they are looking for.				<input checked="" type="checkbox"/>	<input checked="" type="checkbox"/>

Right of appeal

On completion of the assessment:

- the candidate is to be advised of assessment result
- the candidate might disagree with the result of the assessment
- the candidate has the right to challenge the assessment result
- an unsuccessful candidate may apply to the R.T.O. for re-assessment.
(Please note: applications for reassessments are subject to the RTO's policies and procedures)

Duration of Assessment: Single session or over a period of time.

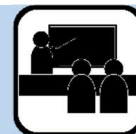
Set Date: _____

Knowledge Assessment



The assessor must be satisfied the candidate has successfully demonstrated each element and performance criteria contained in the Unit of Competency.

Knowledge Assessment Instructions



1. This assessment should be completed in writing (pen not pencil). However, where necessary it may be undertaken verbally. If verbal assessment is undertaken the candidates' responses must be clearly recorded by the assessor. The assessor must clearly note on the assessment that it was undertaken verbally.
2. Candidates should be allowed 10 minutes reading time before commencing the assessment and a further 180 minutes to complete the assessment.
3. The assessment should be completed in a quiet area free from distraction.
4. The assessment is to be completed without the assistance of learning resources. Students may ask the assessor for assistance to clarify questions they do not understand.
5. A pass mark of 90% (119/132) must be achieved for a satisfactory result. The assessor must provide feedback to the candidate to clarify any answers deemed to be incorrect.
6. Reasonable adjustment to the assessment is to be made by the assessor where deemed necessary.



Knowledge Assessment



Question 1

What are the National Work Health (WHS) and Occupational Health and Safety (OHS) Acts about?



Question 2

Under WHS/OHS laws, what are your responsibilities while working?



Question 3

What do codes of practice explain?



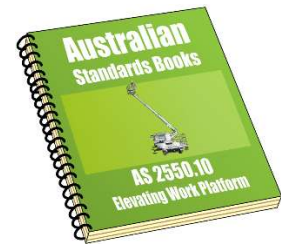
Question 4

What do Australian Standards explain?



Question 5

What are some examples of documentation you should read before doing earthmoving work?



Question 6

Why should you check the operator's manual before using earthmoving equipment?



Question 7

Why should you check the operator's manual before using earthmoving equipment?



Question 8

Why do you need to know what other people are doing on site?



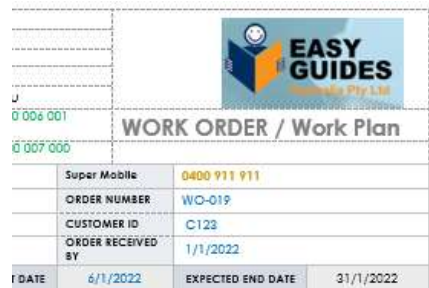
Question 9

What are quality requirements?



Question 10

What do the job's work instructions explain?



Question 11

If a fire starts what are four (4) steps that should be taken?



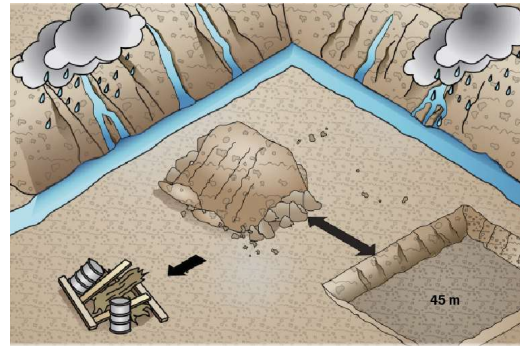
Question 12

Why is it important to co-ordinate your work activities with others at the worksite both before and during operation?



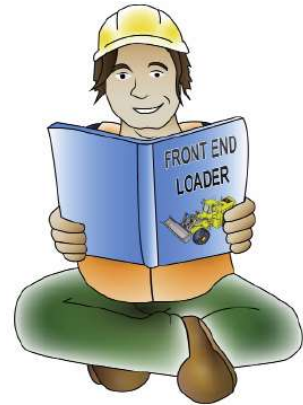
Question 13

How do you choose and set up a location for a stockpile?



Question 14

How can you find out the specifications and limits of the machine you will use?



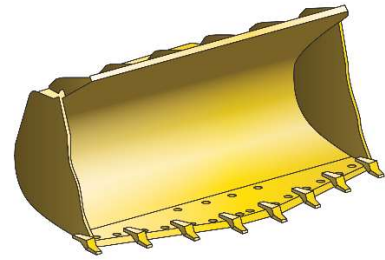
Question 15

How can you find out the maximum safe working load (SWL) of the front end loader?



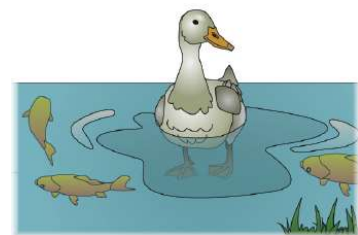
Question 16

How do you find out the cubic capacity of the bucket?



Question 17

What does the Environmental Management Plan (EMP) tell you?



Question 18

What environmental challenges should you be careful of when working? Identify by circling the hazards and labelling them in the image.



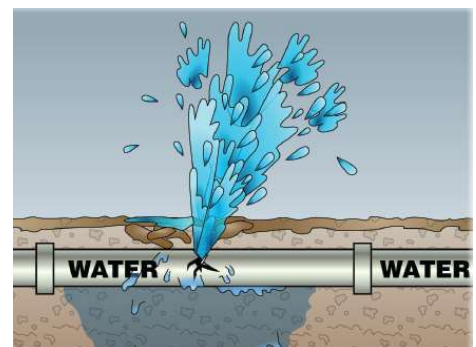
Question 19

What could happen if you damage an underground gas line?



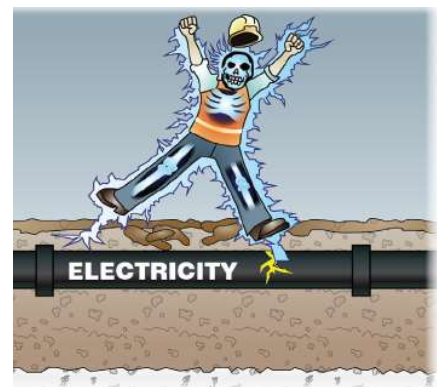
Question 20

What could happen if you damage an underground water pipe?



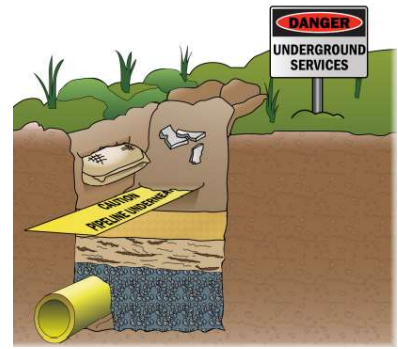
Question 21

What is the danger if you damage an underground electrical cable?



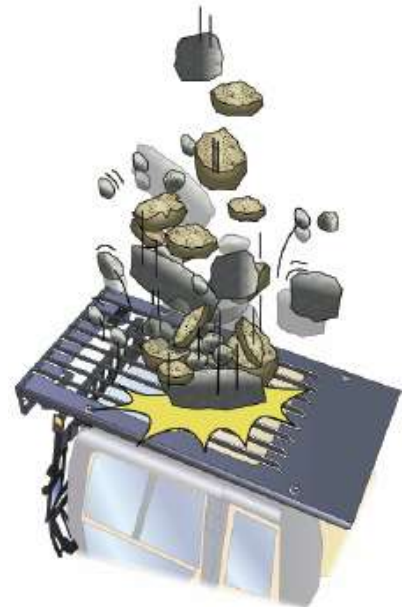
Question 22

Who do you talk to if you damage an underground cable, gas line or other service?



Question 23

You are using the front end loader for demolition work. What extra protection do you need?



Question 24

Why should you check the noise laws for your state/territory before starting work?



Question 25

What does the safety plan tell you?



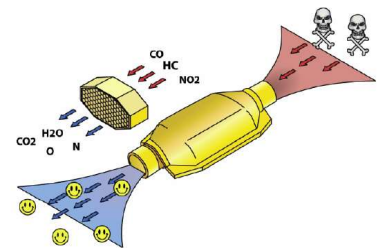
Question 26

Why is it dangerous to operate in an enclosed space?



Question 27

If you must work in a tunnel or enclosed space, what must the loader have?



Question 28

There is a trench near a pedestrian footpath. How can you stop people falling into the trench?



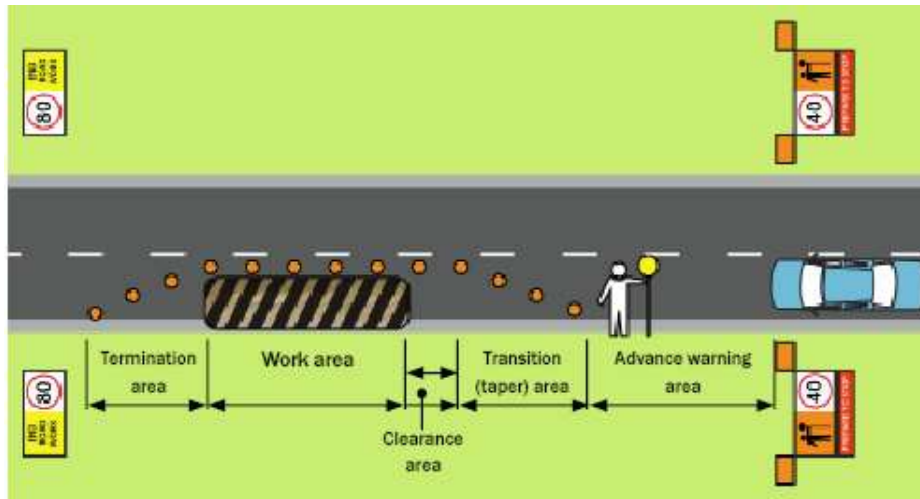
Question 29

What kinds of personal protective equipment (PPE) should you use when:



Question 30

What does the traffic management plan (TMP) tell you?



Question 31

What can you do to control traffic in and around a worksite?



Question 32

Where do you put up warning signs?



Question 33

What safety action do you need to take when checking the pressure or inflating/deflating a tyre fitted to the wheel that has a split safety-locking ring?



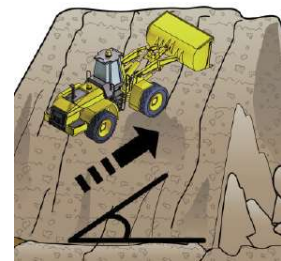
Question 34

How do you safely get in and out of the loader's cabin?



Question 35

Which way should you travel when driving on sloping ground?



Question 36

What do you do if you find a fault with the loader? For example you might see a bulge in a hydraulic hose or a damaged radiator hose.



Question 37

Who can you ask about underground services on the worksite?



Question 38

How can you tell you are near an underground service?



Question 39

What should you use to excavate if you think there's an underground service nearby?



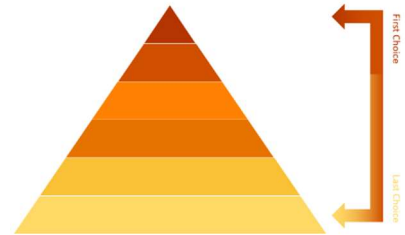
Question 40

What are some hazards you must look for before starting work?



Question 41

The Hierarchy of Hazard Control is a list of controls that you can use to eliminate or lower the danger from a hazard in the workplace. What are the six (6) levels in the hierarchy from the first choice to the last choice?



Question 42

How can you prevent a trench or excavation from caving in on you?



Question 43

You will work in a hazardous area, for example, a confined space. What type of permit might you need to get?



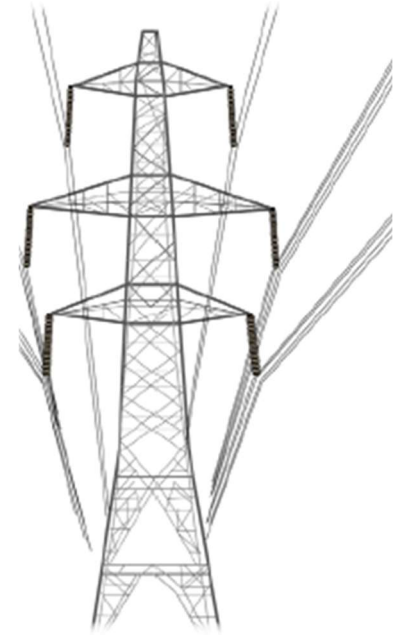
Question 44

What is the minimum safe distance from powerlines?

For example:

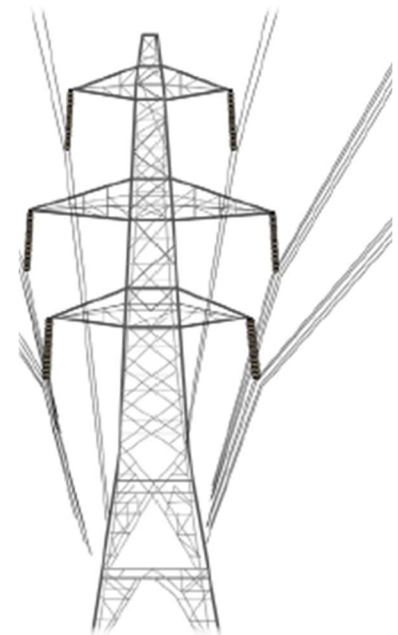
Line type	No go zone	With a spotter	Safe zone
On pole (low voltage)			
Tower (high voltage)			

***National standard but may be different in specific states and territories.**



Question 45

You are operating a front end loader and it touches live powerlines. What do you do?



Question 46

What is fatigue?



Question 47

What are some causes of fatigue?



Question 48

How can you tell someone is fatigued?



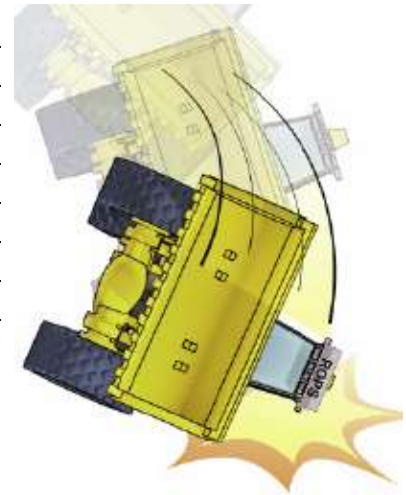
Question 49

You should never lift people in the bucket. Why is this?



Question 50

Which safety devices on a loader help protect you from being hurt or killed if it rolls over?



Question 51

What might happen if you undercut a stockpile, trench or bank?



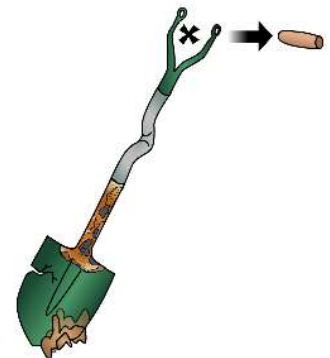
Question 52

What kinds of tools and equipment might you use when doing earthmoving work?



Question 53

What kinds of faults do you check hand tools for?



Question 54

What do you do with faulty hand tools?



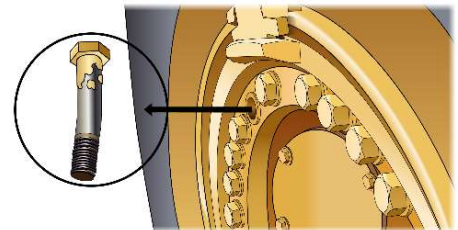
Question 55

When do you test and inspect the front end loader?



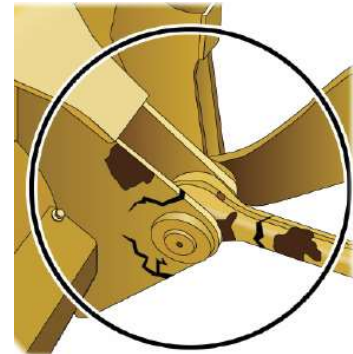
Question 56

What pre-operational checks do you do before using the loader?



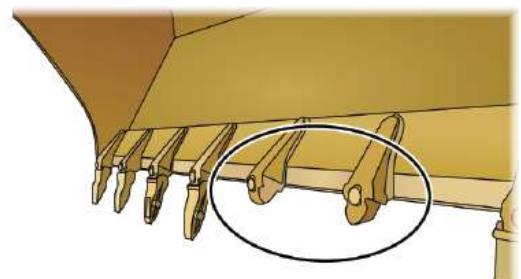
Question 57

What checks do you do to the loader's moving parts and safety features?



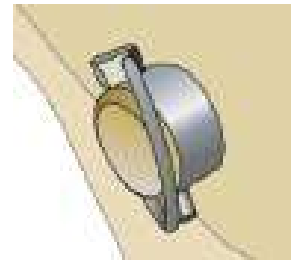
Question 58

What attachment checks do you do?



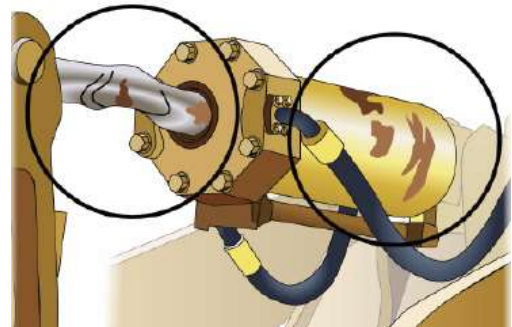
Question 59

When checking attachment pins, how do you make sure they won't fall out?



Question 60

What problems do you check the hydraulic system for?



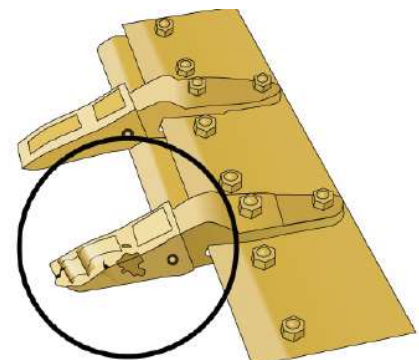
Question 61

You've finished using the front end loader. What post-operational checks do you do?



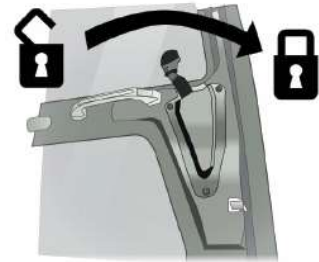
Question 62

What are some common parts that wear or get damaged on a front end loader?



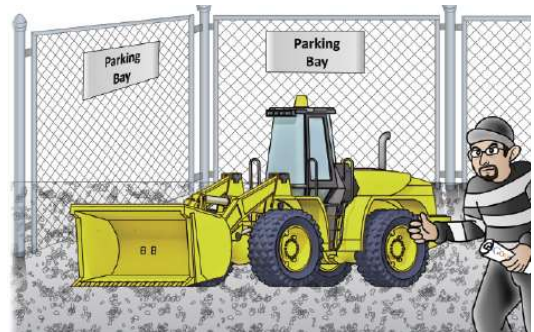
Question 63

What do you do before leaving the loader unattended?



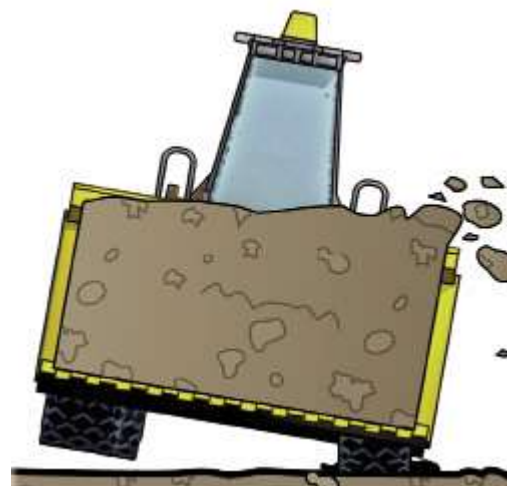
Question 64

Why should you remove the keys from the loader when leaving it parked?



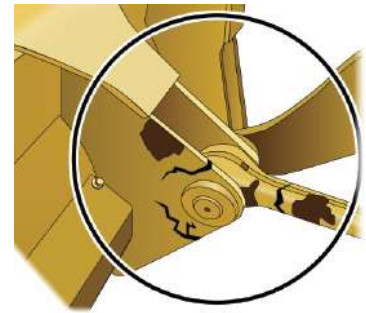
Question 65

Why do the front tyres on a front end loader need to be equal pressure?



Question 66

How do you make sure the bucket is properly attached to the loader?



Question 67

What must you do if you find a problem with the power arms or connections?



Question 68

What kinds of tests should you do before using the loader for earthmoving?



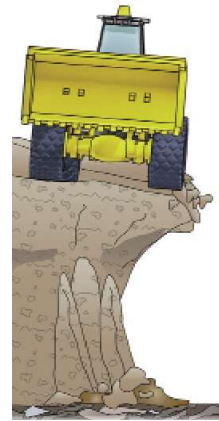
Question 69

When should you refuel your loader?



Question 70

What is the danger of driving along a trench or excavation?



Question 71

While operating the front end loader you get a warning signal from one of the machines monitoring systems or alarms. What action do you take?



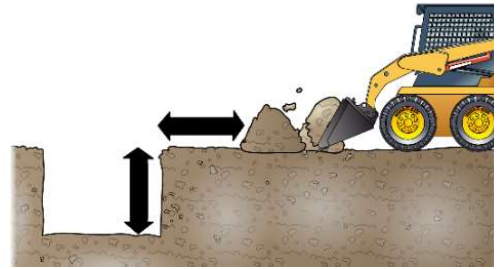
Question 72

How do you safely fill out a stockpile?



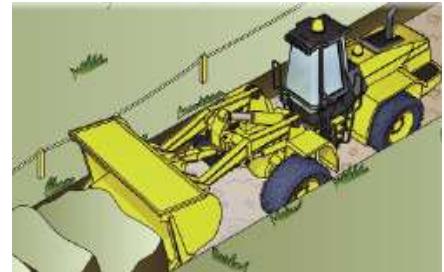
Question 73

When dumping materials near an excavation, how far away from the excavation must you dump the load?



Question 74

How do you strip topsoil? Explain the steps.



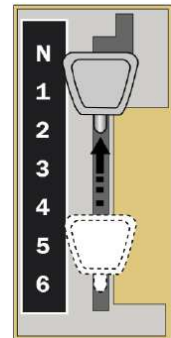
Question 75

How do you safely excavate around a water or gas pipe?



Question 76

When travelling down a steep slope, which gear do you use?



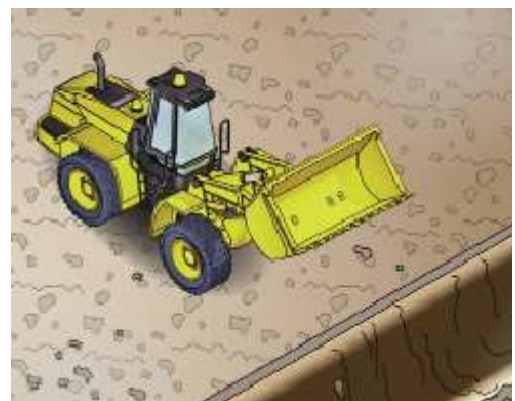
Question 77

Which is harder to excavate, top soil or clay? Why is this?



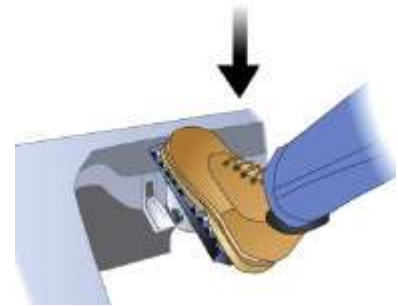
Question 78

You are filling a trench with a front end loader. In which direction should you move towards the trench?



Question 79

If your front end loader uses air brakes, how do you use air brakes safely?



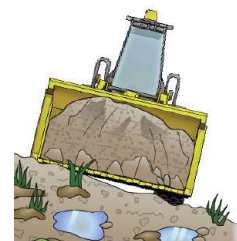
Question 80

What steps do you take to safely pick up, move, and dump materials?



Question 81

You are driving on uneven or soft ground. Does this reduce the load capacity?



Question 82

What safety precautions should you take when dumping a load into a truck?



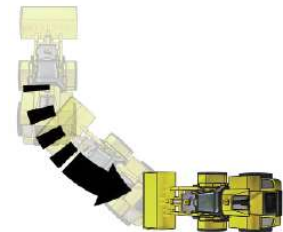
Question 83

How can you communicate and share information with your workmates?



Question 84

What do you do before starting to move a loader from a stationary position?



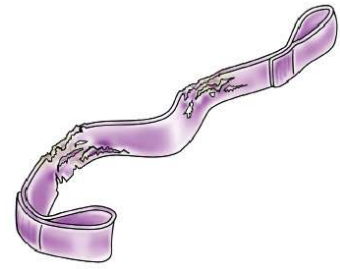
Question 85

How can you find out the weight of a load?



Question 86

What lifting equipment checks do you do?



Question 87

What must a lifting sling have?



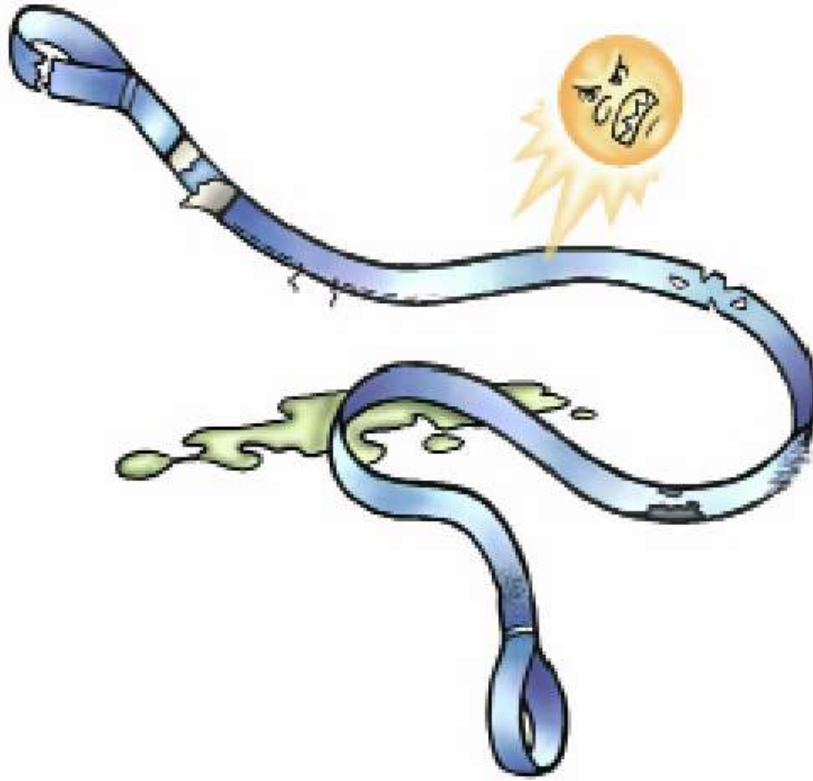
Question 88

What if the sling has no tag or it cannot be read?



Question 89

What are some defects (problems) that stop you using a synthetic sling for lifting? Identify by circling the defects and labelling them in the image.



Question 90

What are some problems that stop you using a flexible steel wire rope (FSWR) for lifting? Identify by circling the defects and labelling them in the image.



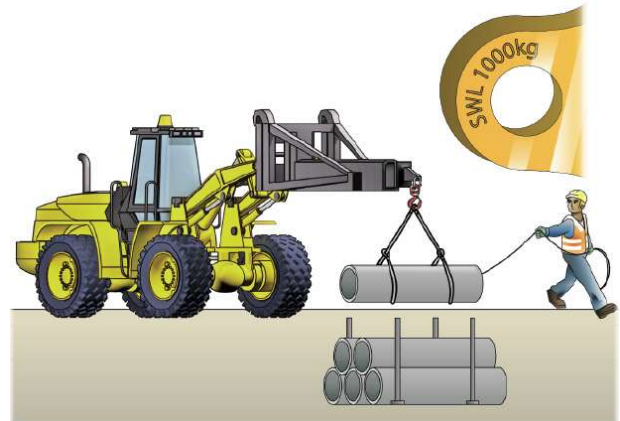
Question 91

What are some problems that stop you using a lifting chain for lifting? Identify by circling the defects and labelling them in the image.



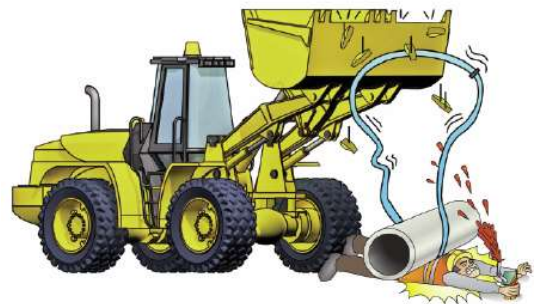
Question 92

Not all front end loaders can be used to sling a load. You want to use the front end loader for slinging a load. What must the loader have?



Question 93

What could happen if you attach slings to the bucket's teeth?



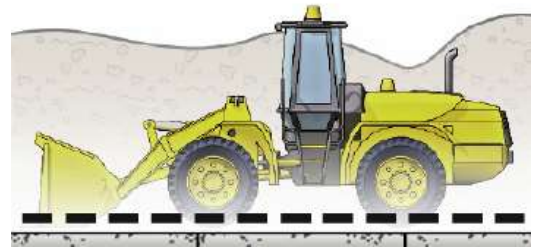
Question 94

What could happen if you use the loader on uneven or sloping ground?



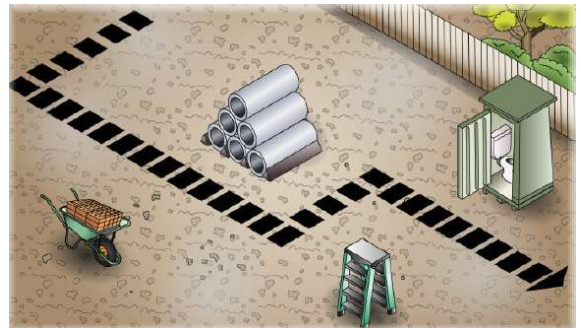
Question 95

When travelling with a load, what kind of ground is the safest to travel on?



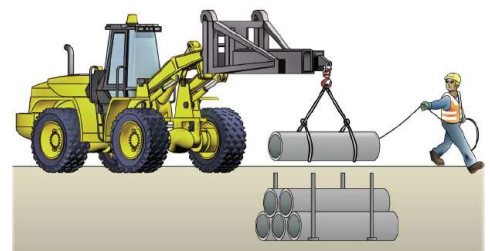
Question 96

What should you plan for before using the front end loader for lifting?



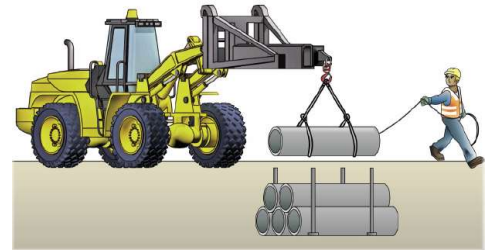
Question 97

You will lift and move a load of pipes. What steps do you take?



Question 98

What are some things you should think about before placing a load on the ground?



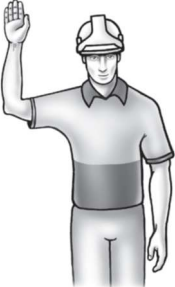

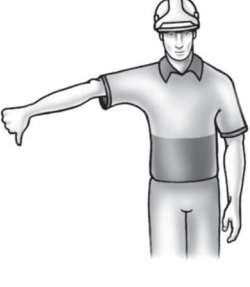
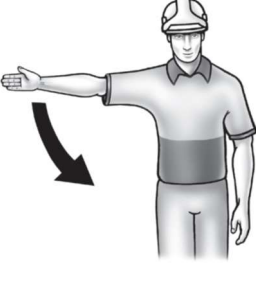
Question 99

One of your workmates is in a trench over 1.5 metres deep. How do you lower pipes safely into the trench?



Question 100

Some of the standard hand signals are shown below. What does each of these signals mean?

Question 101

How can you communicate with a fellow worker who is out of your line of sight?



Question 102

What do you do with the bucket before parking the loader?



Question 103

Where would you not park a front end loader? Identify by circling areas of the image that have hazards.



Question 104

What do you do with hydraulic attachments before shutting down the loader?



Question 105

How do you shut down the loader?



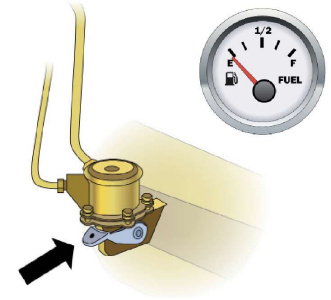
Question 106

What steps do you take when preparing the loader for maintenance?



Question 107

You are using the loader and it runs out of fuel. You fill the tank again but it still won't start. Why is this?



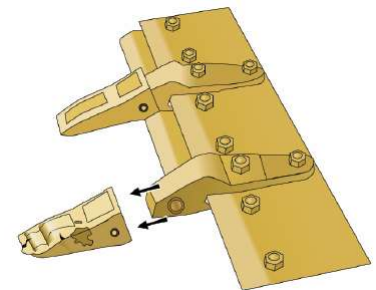
Question 108

How do you know if the tyres are too worn?



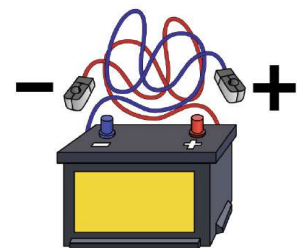
Question 109

What steps do you take to replace damaged or worn bucket teeth?



Question 110

What should you be careful of when replacing the battery?



Question 111

How do you know when and what to service on the loader?



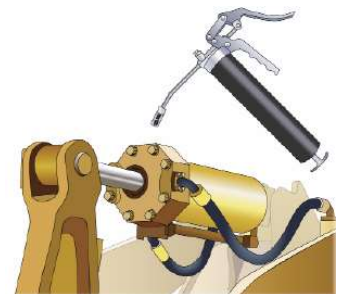
Question 112

What are some examples of maintenance you would do every 10 service hours?



Question 113

When should you lubricate/ grease the necessary parts on your loader?



Question 114

What do you have to clean on the front end loader?



Question 115

After you've finished the job, what should you do?



Question 115

What instructions do you follow when cleaning up?



Question 117

What is the danger of leaving earth and rocks around the work site?



Question 118

What do you do with other equipment and tools you've used?



Question 119

What must you do with waste oil and grease when performing maintenance?



Question 120

During housekeeping activities quantities of hazardous and nonhazardous materials may be recycled or disposed of. How do you keep track of what has been done?



Question 121

Where do you record faults?



Question 122

Where do you record maintenance done by the operator such as refuelling, lubrication or small authorised repairs?



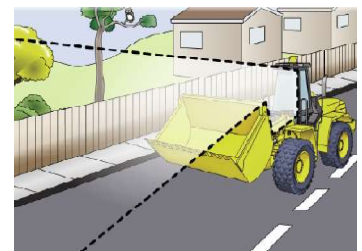
Question 123

How do you prepare a wheeled machine for travel on a public road?



Question 124

What should you do with the bucket before driving on a public road?



Question 125

You need to drive the loader on a public road. The loader has very large tyres. What do you need to do?



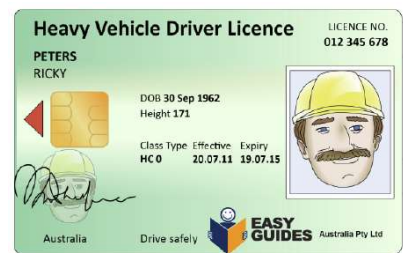
Question 126

Do you need a permit to drive a front end loader on a public road?



Question 127

What kind of licence do you need to drive a front end loader weighing over 4.5 tonnes on a public road?



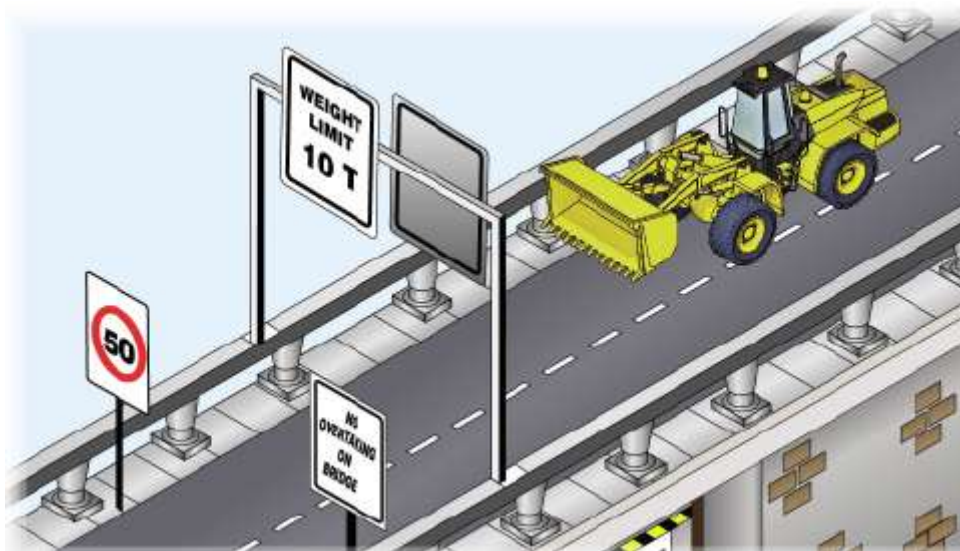
Question 128

Before you drive on a public road, what checks do you make on the loader?



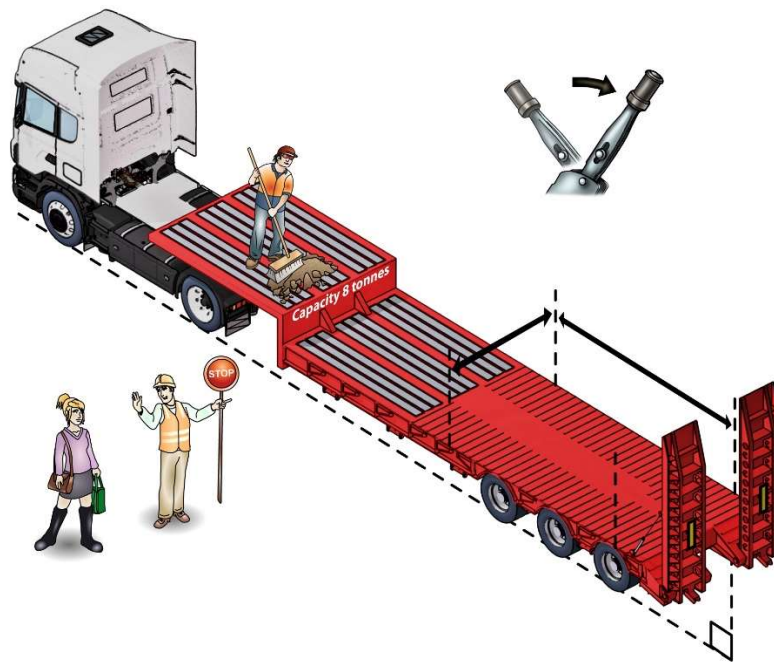
Question 129

Do you have to follow the same traffic rules as other vehicles on public roads?



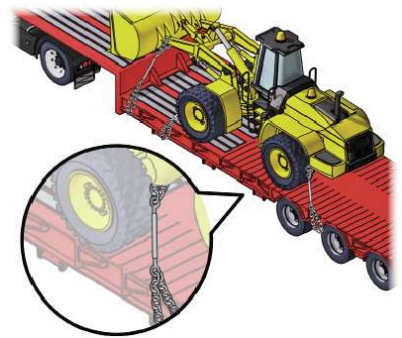
Question 130

A loader is to be transported. How is the preparation done by the person responsible?



Question 132

Are there regulations about securing a load on a truck or trailer?



Score for knowledge assessment

Knowledge Assessment		
Correct answers:	_____ / 132	
Percentage:		
Result (circle):	Satisfactory	Not satisfactory

Assessor feedback:

If you have any questions about your results, speak to your trainer/supervisor.

Practical Assessment



The assessor will assign or give you a work order or task description that outlines the task that you need to perform.

If one is not provided see Example 1 / Work order 1 and Example 2 / Work order 2.

Note: Performing the actual practical task must be filmed and noted of where the video file is stored and assigned to which candidate, along with a copy of the work order must be submitted to assessor.



Practical assessment instructions



You are to demonstrate the ability to:

Operate a Font end loader,

- By lifting,
- carrying and,
- spreading materials,

Safely, effectively and efficiently following workplace procedures to carry out work activity on at least **two occasions**.

You are to submit 2 work orders to candidate, to follow, which outlines work to be performed for at least **2 different material types** such as the following:

- mixing materials
- stripping/spreading materials
- loading, cutting/boxing
- backfilling

or working with top soil, dirt, clay, rock or crusted rock.

Including:

- assisting with loading and unloading wheeled front end loader from float/trailer

Attachments that can be used are the following:

- Loader with lifting lug

An example of a work order / job (requirements) might be the following;

Example 1 / Work Order 1. * Dig out an area for reconstruction, for a new road to be laid and once pipes have been laid for the new road, back fill any dirt to cover sewerage pipes. If any excess dirt is left then dump dirt onto the back of a tip / truck.

Example 2 / Work Order 2. * Remove Top Soil from a site to prepare for crushed rock to be placed down for a country estate drive way. Move Crushed rock from front of house, from a stock pile, to country estate drive way. Flatten the crushed rock of the country estate drive way. Also carry loads of mixing soil bags from front of site to back of house for workers to use to mix concrete.

Resources required for Sample Work Order 1 & 2.

- A **front end** loader.
- 2 Copy's of a work order
- A **site** for traveling with material
- Dump truck** to dump excess dirt material.
- A **site** with top soil with Grass.
- Stock **pile** of Gravel.
- At least 20 bags of concrete mixing material for transport.
- A lifting attachment so that pipe can be lifted and slung.

Practical assessment should be performed in a normal working environment where possible.

However, under some circumstances may occur in a simulated work environment (refer to assessment conditions for further information).

The Assessor must:

- Clearly explain to the candidate what is expected of them
- Check that the candidate has been provided with the necessary tools and equipment
- Complete checklists as the candidate goes through the tasks
- Only question a candidate during a practical task if it is safe to do so
- Stop the assessment immediately if the candidate is doing something dangerous
- Stop the assessment immediately if the machine or objects are likely to be damaged
- Inform the candidate of the result of the assessment
- Provide the candidate with a **work order or job plan** that outline the task to demonstrate, if one is not provided then use the sample contained within this document or one of your own.

If an assessor needs to stop the assessment because of danger or possible damage, the candidate must be marked as not yet competent. If the assessment is stopped, further training would need to take place before a re-assessment can be undertaken.

Tasks in the assessment do not have to be assessed in isolation, they may be done as one continual task.

Note: Performing the actual practical task must be filmed and noted of where the video file is stored.



Summary of practical assessment task.

What to do for practical task demonstration.

Ask the candidate to perform the **pre-start** requirements, when complete they should **drive** the front end loader to an area where they can **operate** it to **lift and carry materials** to pre-determined **specifications** and **spread** the material. The candidate could then **backfill** and compact a pre-dug trench. Now the candidate will be required to complete any **housekeeping** requirements then **prepare the excavator for relocation** and **assist in loading the excavator** onto a float or trailer. If the scenario above was completed twice it should meet the requirements as long as two different material types are used.

If the scenario above was completed twice it should meet the requirements as long as two different material types are used.

Task that can be performed over time – broken up in parts.

This assessment can be performed over time and be assessed in the following;

- Practical Assessment 1** – Pre-Start – Demonstrate the skills and knowledge required to do a prestart check before operating a wheeled front end loader, the actual practical task must be filmed and noted of where the video file is stored.
- Practical Assessment 2** – Drive and operate wheeled front end loader by identifying an hazards and risks, start and operate wheeled front end loader
- Practical Assessment 3** – Complete operations to specification demonstrate the operational use of a wheeled front end loader according to specifications / (work order) using at least two different material types and two different occasions.
- Practical Assessment 4** – if applicable complete operations to specification – Attachments. Fit and remove and use attachments of wheeled front end loader according to job description. See assessor if this task is required in your assessment.
- Practical Assessment 5** – Load, unload and relocate wheeled front end loader.
- Practical Assessment 6** – Housekeeping.

Note: Performing the actual practical task must be filmed and noted of where the video file is stored.

Description of work order / Job (requirements).

You or the assessor is to fill in the work order description that you must perform or attach a copy of the task to be performed to this Learner work book.

Description of work order 1 / Job 1:

Description of work order 2 / Job 2:

Written / Practical Assessment Summary – Competency Sign Off

Files to be submitted.

Written Assessment

1 x Written quiz assessment

Practical Work

2 x activity’s performed in work place or simulated environment (Video footage of candidate performing work order)

Name of Video File 1: _____

Name of Video File 2: _____

Documents that need to be submitted.

2 x Copy’s of work order

1 x Trainer’s Assessment Work book filled in of candidate’s assessment.

Written / Practical Assessment Summary		Satisfactory	Not Satisfactory
0. Written Quiz		<input type="checkbox"/>	<input type="checkbox"/>
1. Pre-Start		<input type="checkbox"/>	<input type="checkbox"/>
2. Drive and operate wheeled front end loader		<input type="checkbox"/>	<input type="checkbox"/>
3. Complete operations to specification		<input type="checkbox"/>	<input type="checkbox"/>
4. Attachments (if necessary) – Optional Task		<input type="checkbox"/>	<input type="checkbox"/>
5. Load, unload and relocate wheeled front end loader		<input type="checkbox"/>	<input type="checkbox"/>
6. Housekeeping		<input type="checkbox"/>	<input type="checkbox"/>
Competency:	Not Yet Competent <input type="checkbox"/> Date _____	Competent <input type="checkbox"/> Date _____	
Feedback to be given to candidate or to Workplace Supervisor			
Trainer / Assessor signature: Date:	The learner has been assessed as <input type="checkbox"/> Not Yet competent / <input type="checkbox"/> competent in the elements and performance criteria, critical aspects for assessment, required skills and knowledge for this unit and the evidence presented is: <input type="checkbox"/> Authentic <input type="checkbox"/> Valid <input type="checkbox"/> Reliable <input type="checkbox"/> Current <input type="checkbox"/> Sufficient		