

# LEARNER GUIDE

## Non-slewing Crane



RII COMPETENCY

**Training support material for:**

**RIIAN212E**

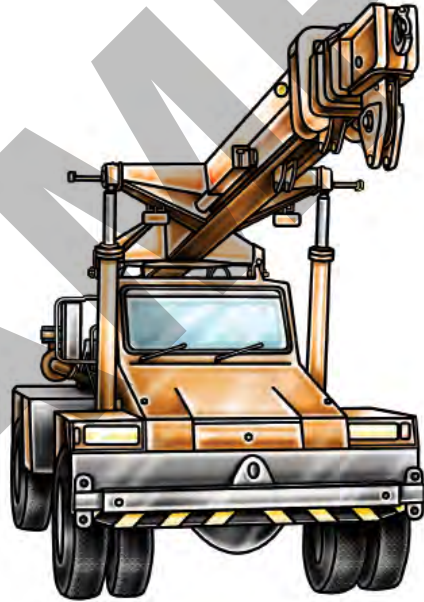
**Conduct non-slewing crane  
operations**



# CONTENTS

About this guide	4
Introduction to non-slewing crane	5
Element 1 Prepare for non-slewing crane operations	9
Element 2 Operate non-slewing crane	59
Element 3 Travel crane	158
Element 4 Perform multiple crane lifts	165
Element 5 Conduct housekeeping activities	166

# INTRODUCTION TO NON-SLEWING CRANE

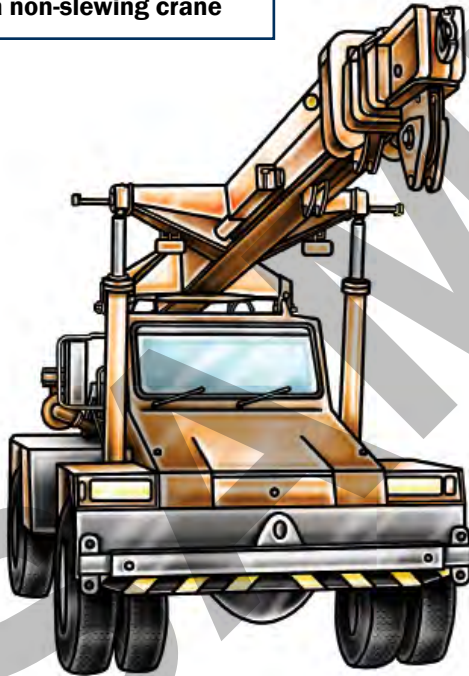


## What is a non-slewing crane?

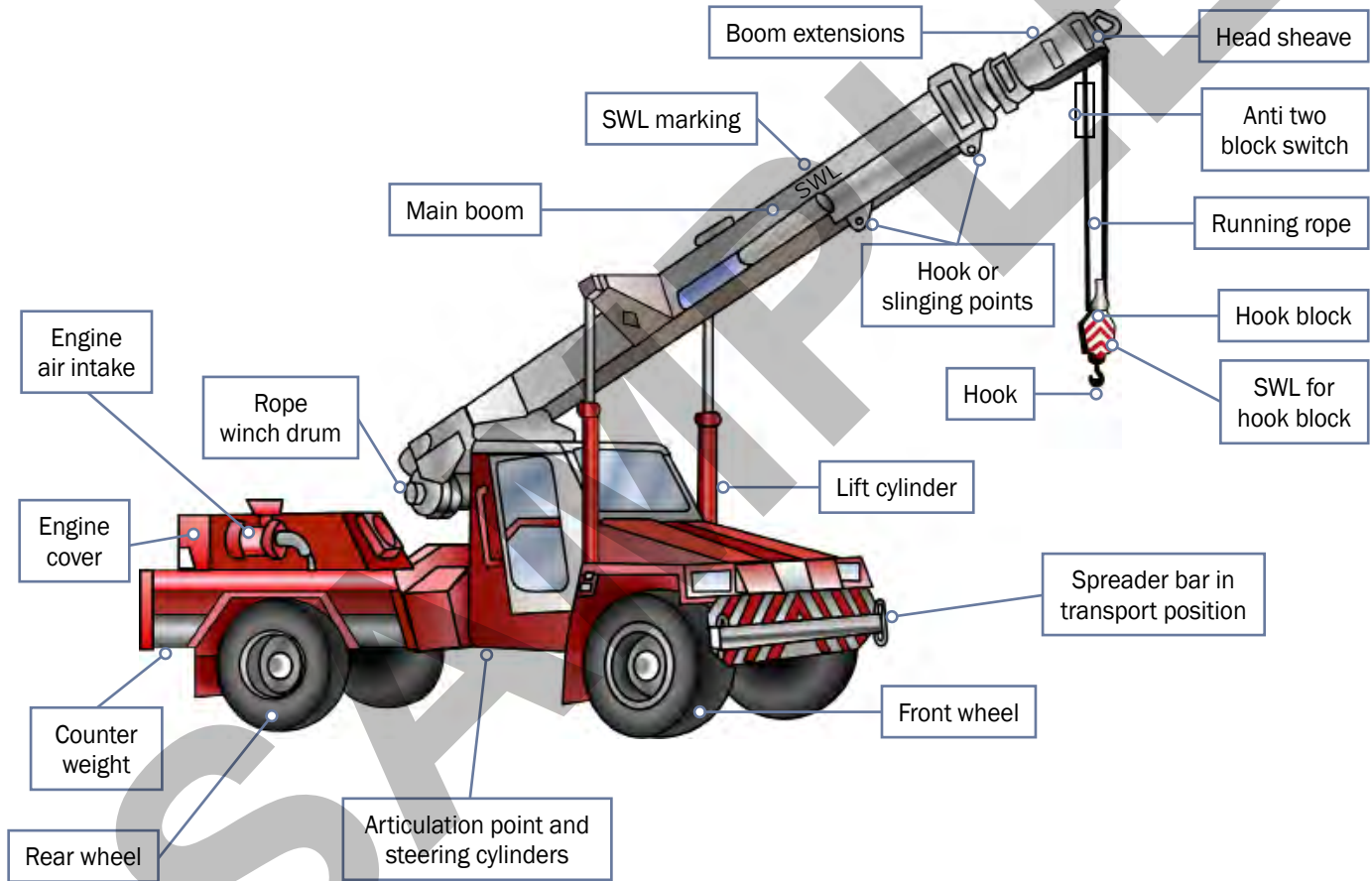
A non-slewing crane is a powered crane which features a boom or jib that does not slew.

The boom can only luff up and down and telescope in and out. The crane is mounted on a vehicle.

**In some states a telescopic handler is classed as a non-slewing crane**



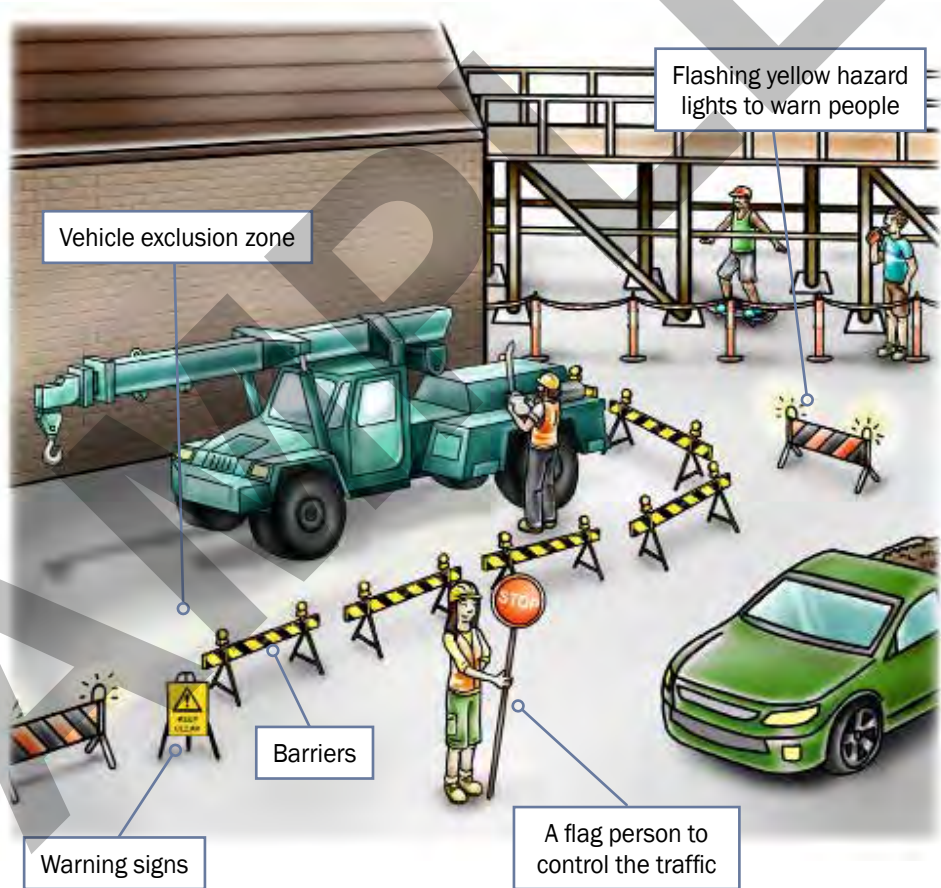
## Parts of a non-slewing crane



**QUESTION 21**

What hazard controls can you use for vehicles or plant on the job?

Some methods you can use are:

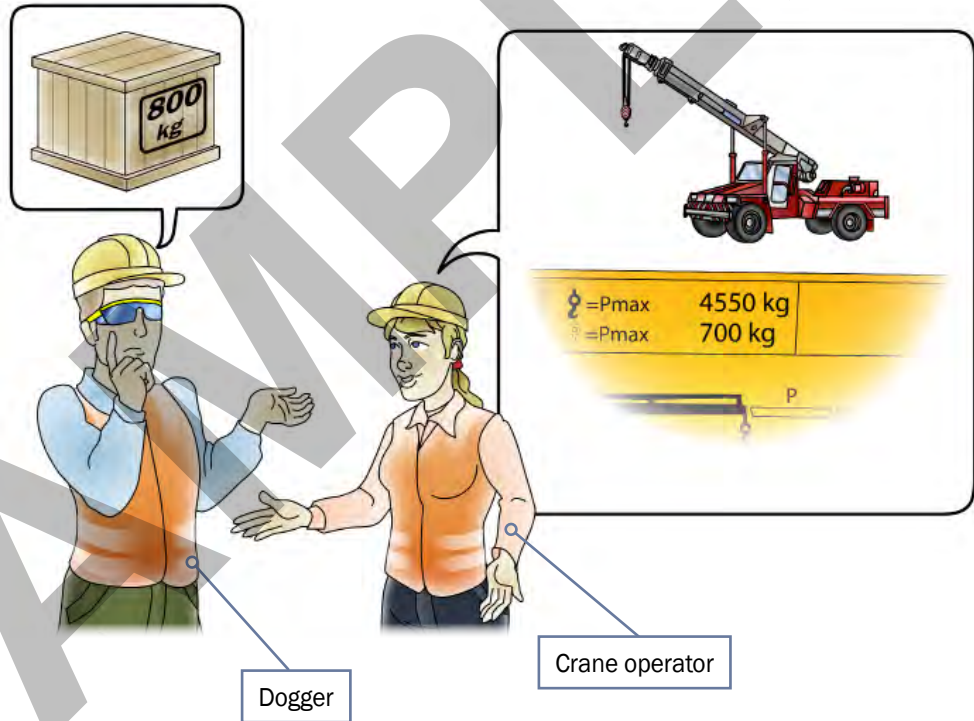


**QUESTION 27**

Is it the crane operator's job (responsibility) to know the weight of the load?

**Yes.** The dogger and the crane operator must communicate about the weight of the load and the crane's capacity (the weight it can lift).

The crane operator needs to tell the dogger about the capacity and limitations of the crane.



**QUESTION 33***.....CONTINUED FROM PREVIOUS PAGE*

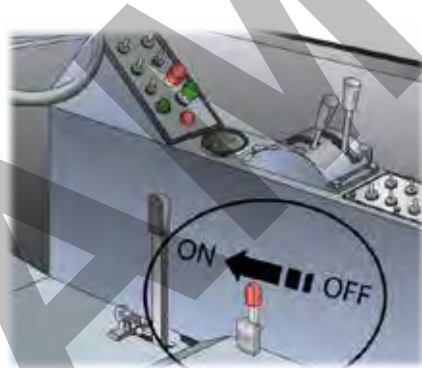
You need to plan the path for the crane and load.

What do you need to think about?

Turn with a long radius to reduce the articulation of the crane. Articulation reduces the rated capacity of the crane.



Carry the load uphill of the crane. Drive in reverse down a slope to keep the load close to the crane.



Apply axle locks (if fitted). Follow the manufacturer's instructions.



Carry the load as close to the ground as possible.



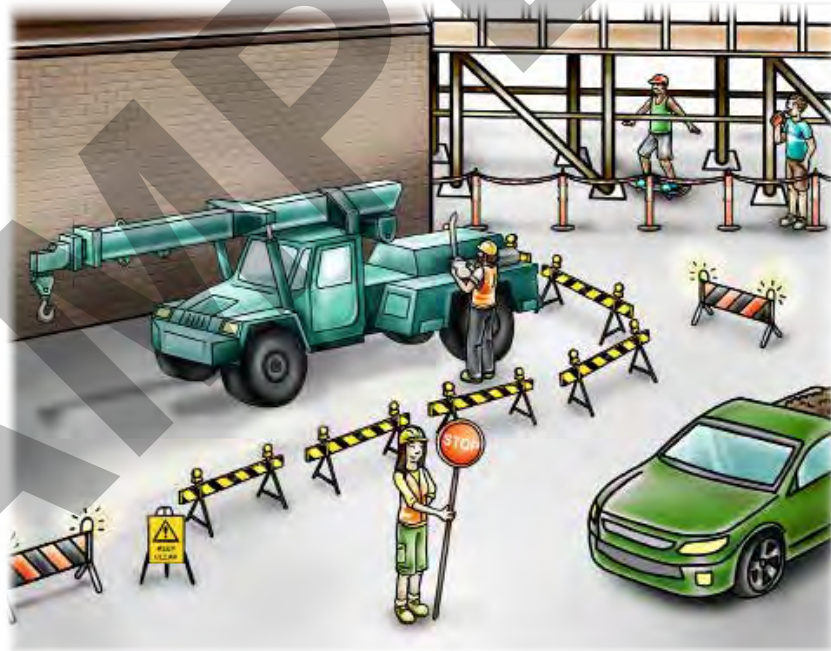
**QUESTION 45**

You need to use a crane on a public road.

Do you have to organise it with the local council before starting the job?

Sometimes you might need a permit because of zoning or traffic control.

You will also have to check if there are any rules for using a crane, and where to set it up. Are exclusion zones needed?



# OPERATE NON-SLEWING CRANE

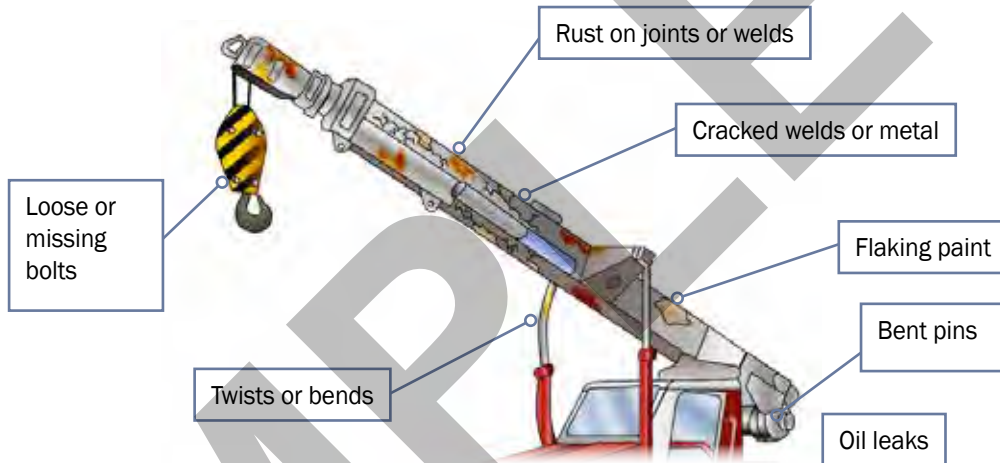
## Element 2



**QUESTION 46**

You are inspecting the crane.

What are some defects you should look for on the boom or superstructure?



**QUESTION 47**

You are using a rubber tyre crane. Your crane's tyres must be at the right pressure.

Why is this important?

Tyres that are low in pressure, flat or at different pressures can make the crane unstable.

Check the load chart to find the correct tyre pressure for the crane.

