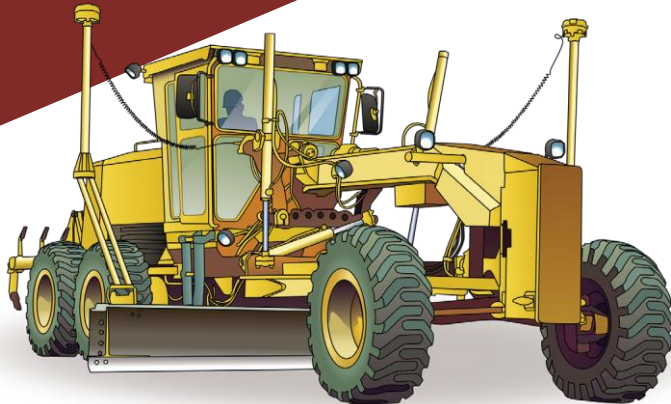


LEARNER GUIDE



Grader TICKET



Training support material for:

RIIMPO324F

Conduct civil construction grader operations

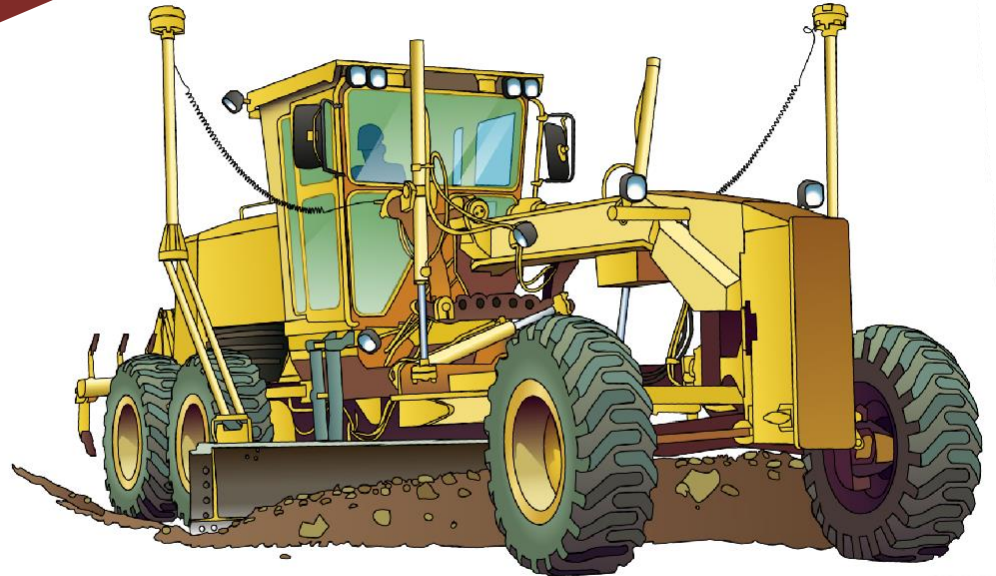
Produced by:



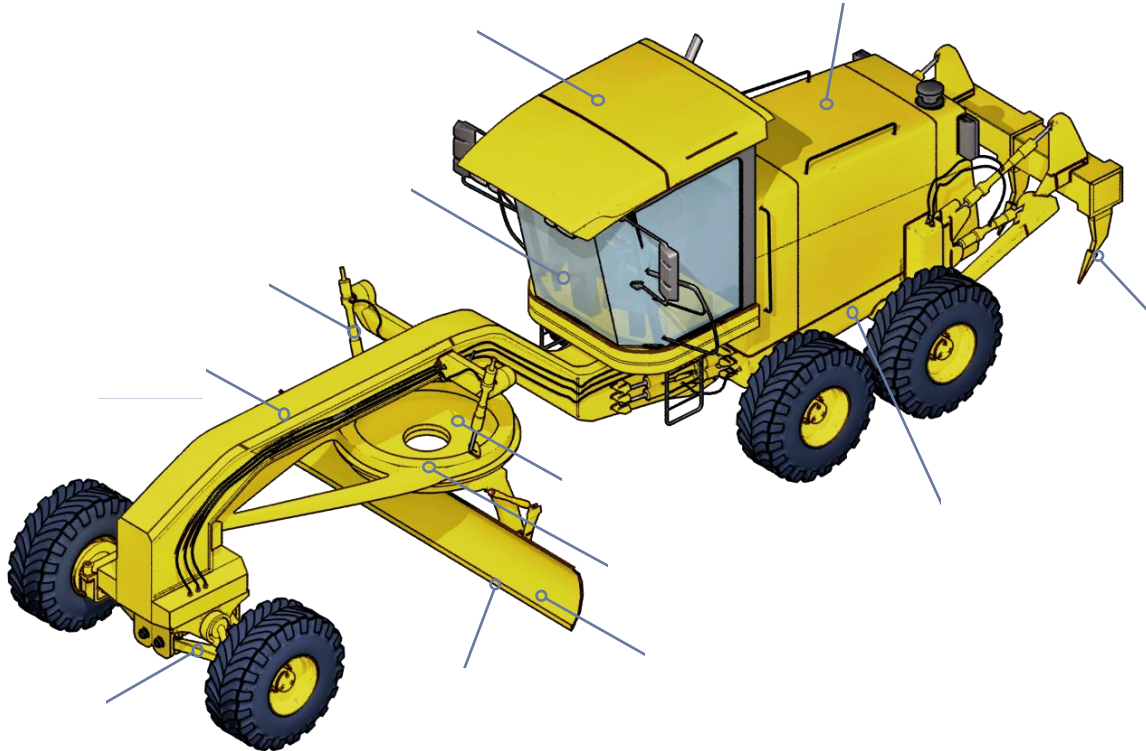
Contents

Language – Literacy – Numeracy (LLN)	4
Acknowledgements	6
Introduction to grader	7
General information	10
	13
Chapter 1 Plan and prepare for work	21
Chapter 2 Identify and control hazards	46
Chapter 3 Check and monitor equipment	88
Chapter 4 Operate/use equipment	115
Chapter 5 Shut down and store equipment	147
Chapter 6 Maintain equipment	155
Chapter 7 Housekeeping	174
Chapter 8 Record keeping	179
Chapter 9 Relocate equipment	181
Chapter 10 Attachments	188

Introduction to Grader



An example of a grader



Plan and prepare for work

Chapter 1



Work Health & Safety Legislative Requirements



QUESTION 2

What are some examples of documentation you should read before doing earthmoving work?

QUESTION 3

Why should you check the operator's manual before using earthmoving equipment?

QUESTION 4

What do codes of practice explain?

QUESTION 5

What do Australian Standards explain?

QUESTION 6

What equipment should be on site to deal with an emergency?

QUESTION 8

What kinds of information do you need before starting work?

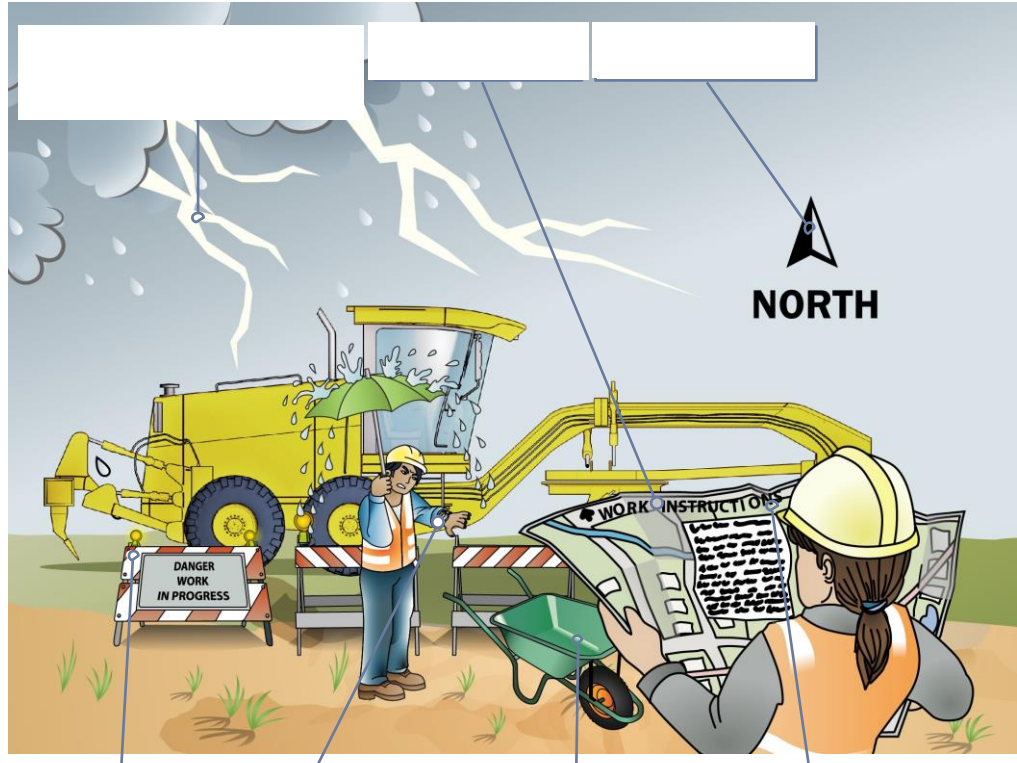
QUESTION 9

When planning your job, why do you need to know what other people are doing on site?

QUESTION 10

What do the job's work instructions explain?

Work instructions explain:

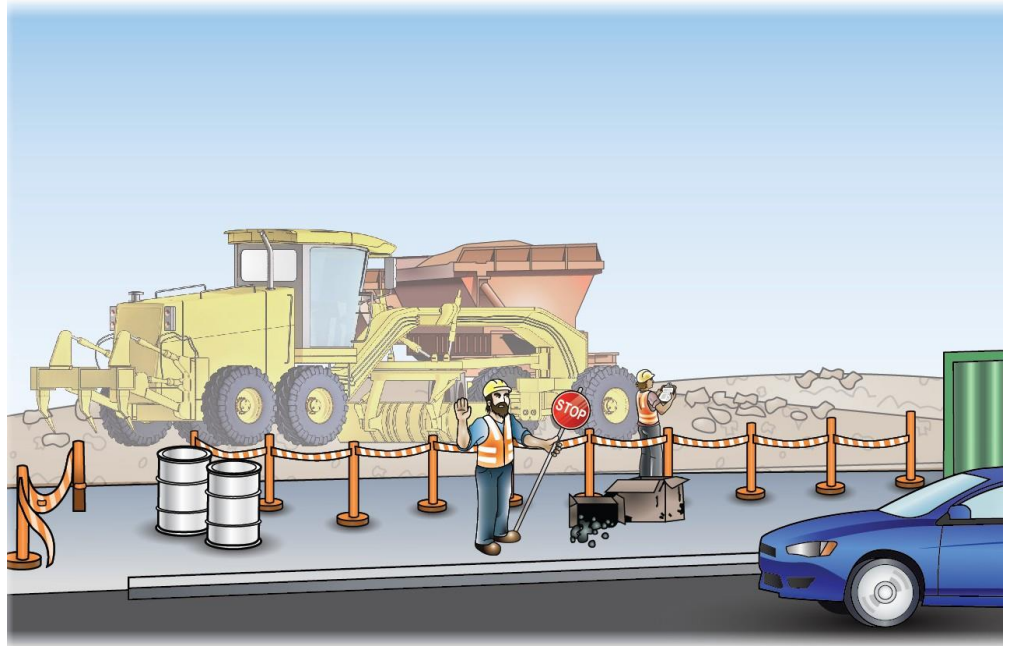


QUESTION 11

What equipment may be used in a traffic control plan?

QUESTION 12

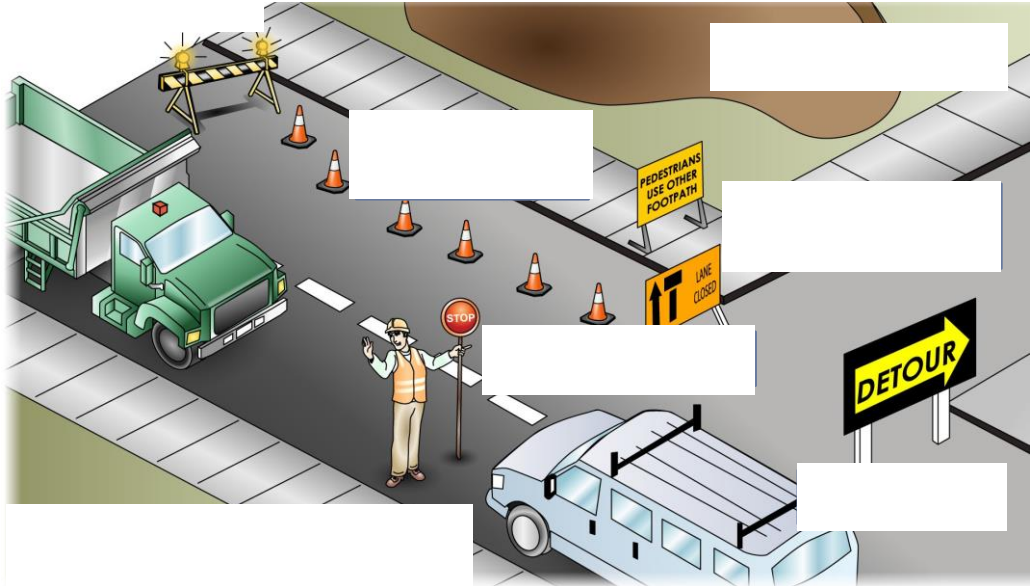
What does the traffic management plan (TMP) tell you?



QUESTION 13

What can you do to control traffic in and around a worksite?

You can:



Communication



Choosing the right communication method

3

Communicating with people

Communication – shift handovers



Identify and control hazards

Chapter 2

