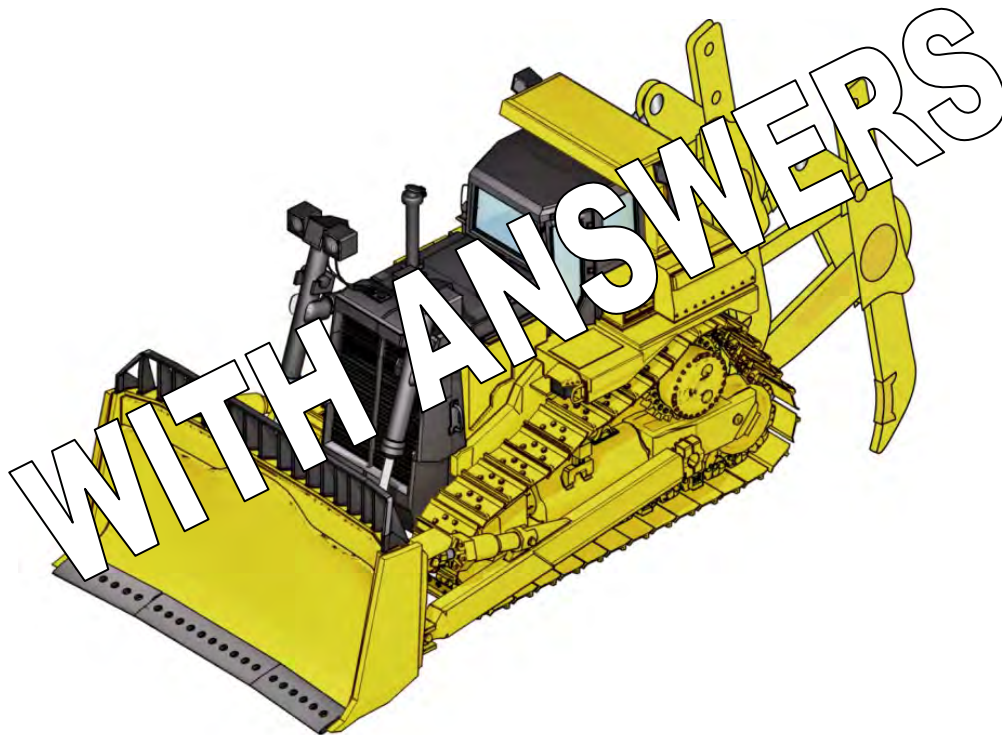


# Dozer

## Learner Workbook Marking Guide (Formative assessment)



RIIMPO323E Conduct civil construction dozer operations

This resource was developed by:



# Contents

Application / Context of Assessment.....	4
Assessment Conditions .....	4
Summary of Practical tasks to be performed. ....	5
Equipment description.....	6
Assessor’s qualifications and assessment conditions.....	6
Assessment Guidelines .....	6
Knowledge Assessment .....	8
Knowledge Assessment Instructions .....	8
Practical Assessment – Check List.....	35
Written / Practical Assessment Summary – Competency Sign Off .....	51
Appendix. ....	52
Basic Pre-Inspection Check list. ....	52
Identify Components for dozer.....	52
Check that each item of dozer is operational. Use Pre-Inspection Check list. ....	52
Basic steps on how you strip top soil.....	53
Add an Attachment onto a Dozer. ....	56
Basic Steps on how to load a dozer onto a float or transport vehicle.....	58

## Knowledge Assessment



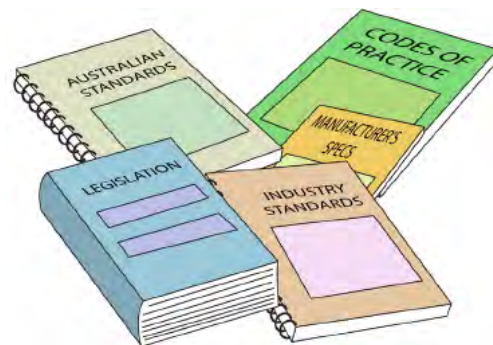
### Question 1

#### What are the National Work Health (WHS) and Occupational Health and Safety (OHS) Acts about?

The Acts explain how to keep your workplace safe and healthy. They explain what you need to do to meet your duty of care.

For example: You must make sure you do earthmoving work in a way that won't put yourself or others at risk. You must use earthmoving equipment according to instructions.

Always check your state/territory requirements as Acts may vary in different jurisdictions.



### Question 2

#### Under WHS/OHS laws, what are your responsibilities while working?

You must work in a way that is safe. You must not risk the health and safety of yourself or others.

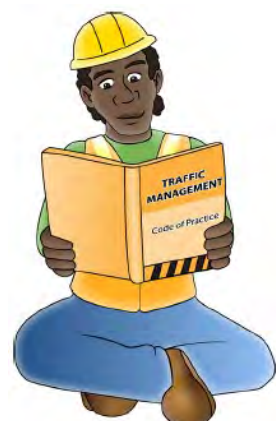


### Question 3

#### What do codes of practice explain?

Codes of practice are practical guidelines on how to comply or follow the rules in legislation/laws.

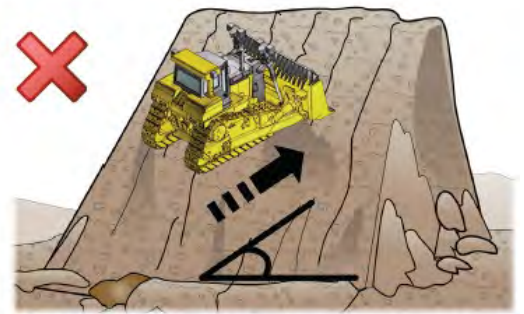
For example: A traffic management Code of Practice will tell you all the rules a traffic controller must follow. For example, a traffic controller must have a zero percent blood/alcohol concentration/reading while performing traffic control duties.



**Question 47**

**Which way should you travel when driving on steep sloping ground?**

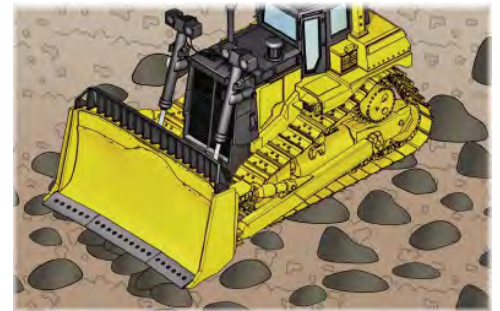
Go straight up or down the hill, not at an angle



**Question 48**

**You are using the dozer and ripping rocks. The tracks are slipping. How can you increase traction?**

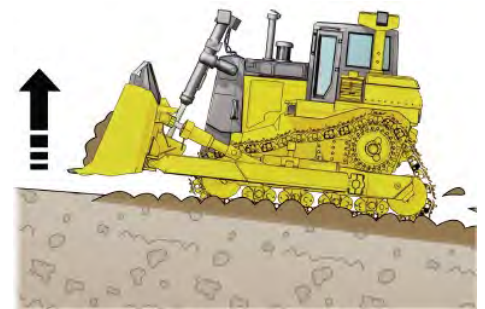
Try raising the ripper until the tracks or tyres grip.



**Question 49**

**You are dozing soft or muddy dirt and the tracks start to spin. What can you do to get more grip?**

Raise the blade so you are not pushing as much material.



**Question 50**

**Your dozer has a side boom (pipe layer) attached. How do you find out the safe working load (SWL)?**

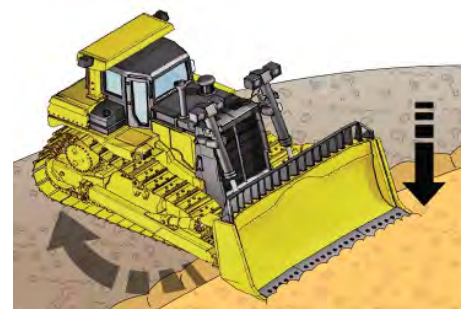
Check the load plate or SWL marking on the side boom.



**Question 51**

**How do you stop the dozer from drifting sideways on a sloping surface?**

Turn the dozer into the grade and lower the blade.



### Question 52

#### How do you use the dozer as a crane to lay pipes?

The dozer needs a side boom with an approved lifting lug.

- Check the SWL
- Find out of the weight of the load
- Choose the right slings and gear
- Ask someone to help you and use a tagline.



### Question 53

#### Which is harder to excavate, top soil or clay? Why?

Clay. Clay is denser and does not break up as easily as top soil.



### Question 54

#### How do you safely clear trees?

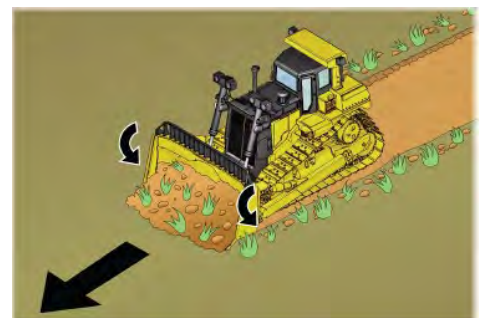
1. Inspect the tree for overhead dead branches.
2. Check which way the tree is leaning.
3. Don't come in under the lean. Move the machine to the other side.
4. Use the low gear.
5. Lift the blade to a safe working height.
6. Push the tree in the same direction as the lean.
7. Stop as soon as the tree starts to free fall and reverse quickly to stop the roots coming up underneath you.
8. Move the timber to the dump area or pile (windrow). How do you safely
9. Backfill any holes in the ground.



### Question 55

#### How do you cut and fill to level out soil?

Tilt the blade forwards a little. Drive forwards and the blade will push the soil from the high spots and fill out the low spots.



## Practical Assessment – Check List

The skills and knowledge required to operate a dozer to load, distribute and place materials, work must be performed on at least two occasions and carrying out the actual practical task must be filmed and noted of where the video file is stored.

**Note** See appendix for guidelines on what to look out for when candidate is performing practical tasks. Use the Appendix topic steps as basic benchmark guides.

### Practical Assessment 1 – Pre-Start

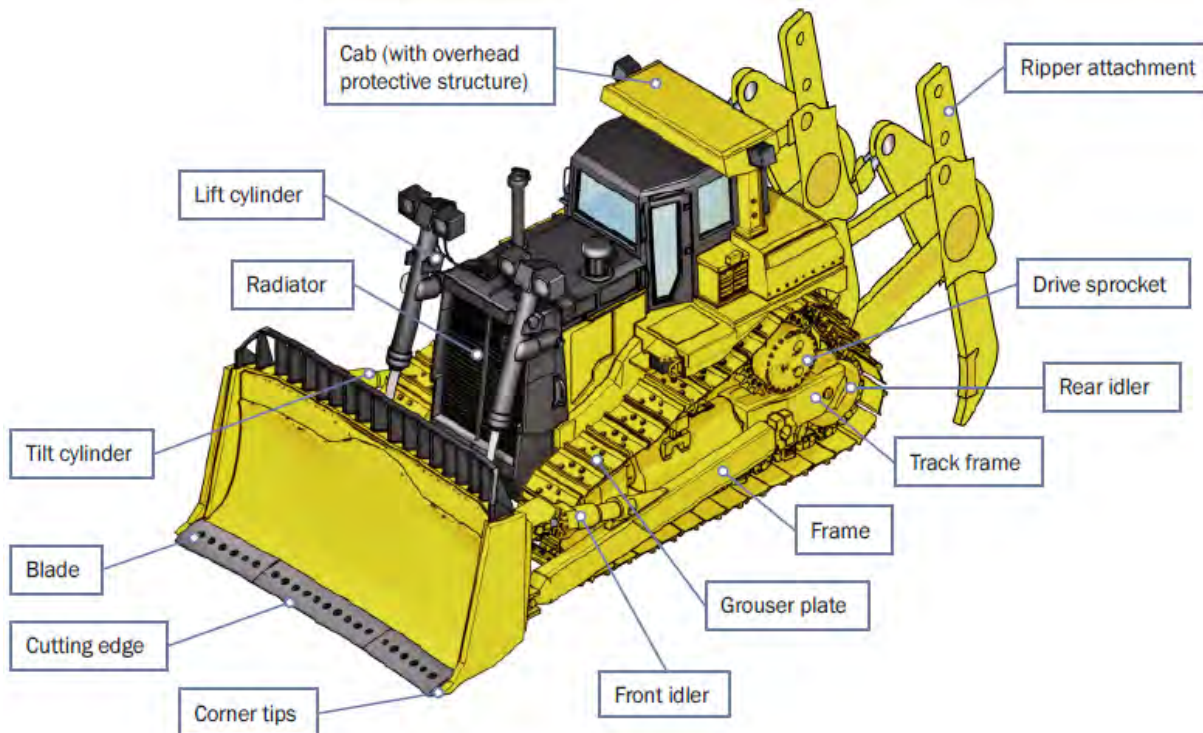


Observation performed when performing Practical Task 1 from work order provided (Job 1, Job 2)	Yes	No	N/A	Job 1	Job 2
Candidate:					
Located and apply relevant documentation, policies and procedures.	<input type="checkbox"/>	<input type="checkbox"/>	<input type="checkbox"/>		
<ul style="list-style-type: none"> <li>Locates operator's manual for dozer and finds requirements for pre-start and start-up checks.</li> </ul>				<input type="checkbox"/>	<input type="checkbox"/>
<ul style="list-style-type: none"> <li>Locates site policies and procedures for personal protective equipment requirements when operating dozer.</li> </ul>				<input type="checkbox"/>	<input type="checkbox"/>
<ul style="list-style-type: none"> <li>Candidate displays preparedness for emergency situations by outlining the steps to be taken in the case of a fire or accident.</li> </ul>				<input type="checkbox"/>	<input type="checkbox"/>
<ul style="list-style-type: none"> <li>Interrupt work order or requirements before performing work task.</li> </ul>				<input type="checkbox"/>	<input type="checkbox"/>
Selected and wear personal protective equipment.	<input type="checkbox"/>	<input type="checkbox"/>	<input type="checkbox"/>		
<ul style="list-style-type: none"> <li>PPE selected must be as per site policies and relevant to the task. As a minimum MUST include appropriate footwear, Hi-visibility workwear and hard hat.</li> </ul>				<input type="checkbox"/>	<input type="checkbox"/>
<ul style="list-style-type: none"> <li>PPE must be checked for serviceability and correctly fitted.</li> </ul>				<input type="checkbox"/>	<input type="checkbox"/>
Conducted pre-start inspection of dozer.	<input type="checkbox"/>	<input type="checkbox"/>	<input type="checkbox"/>		
<ul style="list-style-type: none"> <li>Pre-start check is carried out as per operators manual and workplace policies and procedures. Where possible a completed pre-start checklist should be provided as supporting evidence.</li> </ul>				<input type="checkbox"/>	<input type="checkbox"/>
<ul style="list-style-type: none"> <li>During inspection the candidate must identify and/or verbalise any common faults they are looking for.</li> </ul>				<input type="checkbox"/>	<input type="checkbox"/>
<ul style="list-style-type: none"> <li>Faults and/or damage found during inspection must be managed as per workplace policies and procedures. This should include, tagging out faulty equipment, isolating faulty equipment, reporting to the appropriate person and recording in a logbook. If no faults or damage are found the candidate must verbalise the procedure for the worksite to the assessor.</li> </ul>				<input type="checkbox"/>	<input type="checkbox"/>
Carried out vehicle refuelling requirements and procedures where applicable.	<input type="checkbox"/>	<input type="checkbox"/>	<input type="checkbox"/>		

# Appendix.

## Basic Pre-Inspection Check list.

Identify Components for dozer.



Check that each item of dozer is operational. Use Pre-Inspection Check list.

**EARTHMOVING EQUIPMENT - Daily Inspection Checklist** Week Starting \_\_\_/\_\_\_/\_\_\_

Company/Site \_\_\_\_\_ Machine Type \_\_\_\_\_  
 Machine Hour Meter \_\_\_\_\_ / \_\_\_\_\_ / \_\_\_\_\_ Machine Number \_\_\_\_\_

<b>CHECK DAILY BEFORE EACH SHIFT:</b> [✓] = OK [X] = Action needed [N/A] = Not applicable	Mon	Tue	Wed	Thur	Frid	Sat	Sun
<b>WEAR OR DAMAGE:</b> structure, guards, chains, hooks, pins...							
<b>HYDRAULICS:</b> rams, hoses, leaks, wear...							
<b>WHEELS, TRACKS, TYRES:</b> nuts, pressure, wear, tension...							
<b>ATTACHMENTS:</b> bucket, cutting edge, pins, teeth, pivots...							
<b>FLUIDS:</b> oil, hydraulic, coolant, fuel, battery, wiper water...							
<b>CABIN:</b> seat, seat belts, ROPS/FOPS, loose objects, visibility, fire extinguisher, windows, washer, wipers, mirrors, demister...							
<b>LOAD CAPACITY PLATE:</b> present, legible, clean, correct...							
<b>BRAKES:</b> park brake, service brake...							
<b>CONTROLS:</b> steering, indicators, lights, gauges, operation...							
<b>WARNING DEVICES:</b> horn, reversing beeper, alarms, lights...							
<b>OTHER:</b> warning signs, operator manual, decals, locks, radio...							
Operator doing check to clearly write/sign their name at the bottom of each column.							

FAULT REPORTED BY \_\_\_\_\_ Date: \_\_\_/\_\_\_/\_\_\_

**DANGER**  
DO NOT OPERATE

Description of fault \_\_\_\_\_

NOTE: Operator to TAG OUT machine if needed.

**ACTION TAKEN TO RETURN TO SERVICE**

Print Name \_\_\_\_\_

Date \_\_\_/\_\_\_/\_\_\_ Signature \_\_\_\_\_