

LEARNER GUIDE



Backhoe/ Loader TICKET

RIIMP0319E

Conduct backhoe/loader operations



**EASY
GUIDES**
Australia Pty Ltd

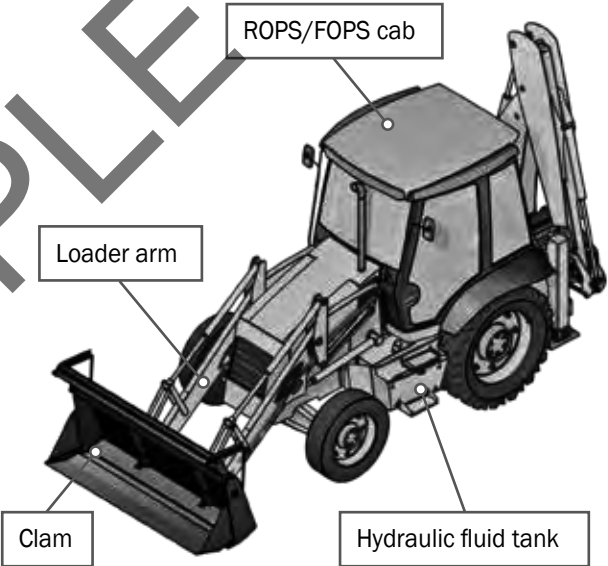
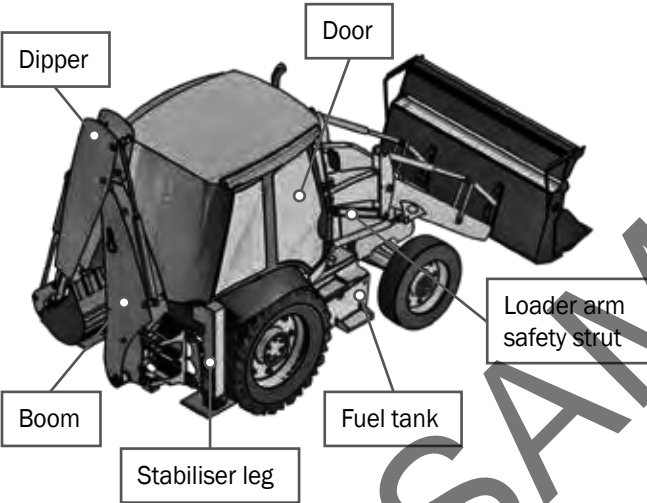
Industry Training Resources

Contents

Acknowledgements	4
Introduction to backhoe/loader	5
General information	11
Element 1 Plan and prepare for backhoe/loader operations	55
Element 2 Operate the backhoe/loader in line with established requirements	77
Element 3 Load, carry and place materials to complete work activity	135
Element 4 Select, remove and fit attachment for a backhoe/loader	169
Element 5 Relocate the backhoe/loader	183
Element 6 Conduct housekeeping activities	197

What is a backhoe/loader?

A backhoe/loader is a machine with a front bucket and also a rear boom and attachment. You can use a backhoe/loader as a lifting machine if the boom has a proper lifting lug and safe working load (SWL).



Environmental management plan (EMP) (continued)

Example 2:

Risk: Noise.

Cause: Engine noise from heavy machinery.

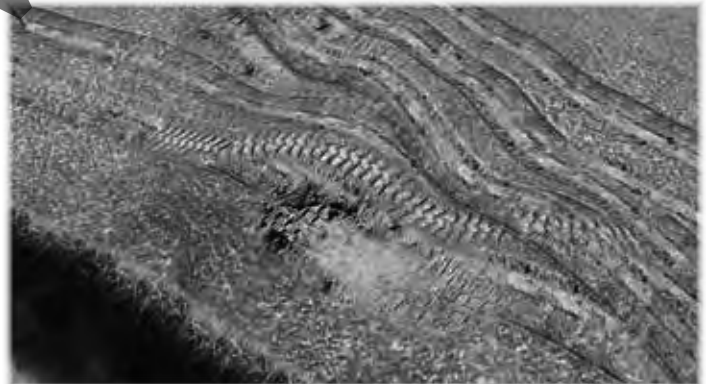
Control: Work on site to be carried out between 7 am and 6 pm.

**Example 3:**

Risk: Loss of topsoil.

Cause: Driving across a paddock or over vegetation.

Control: Go around the paddock even if it increases the time the job takes.



Decibel levels of common sounds

You must wear hearing protection when operating earthmoving equipment.

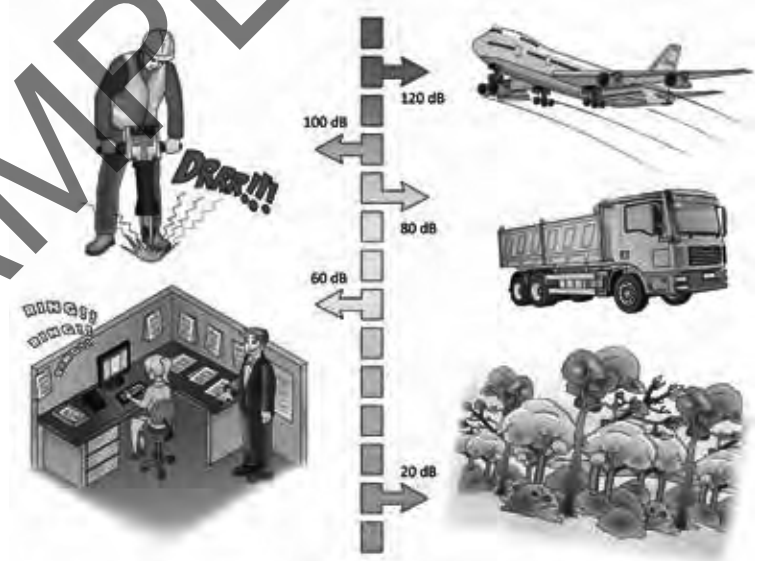
This is important because 8 hours of noise at 85 db (decibels), or noise levels of 140 db even briefly can permanently damage your hearing.

Hearing loss is:

- slow
- painless
- irreversible.

Here are some examples of levels of noise in different environments.

- A forest has about 20 db of noise
- In an office there might be around 60 db
- Standing outside a truck generates about 80 db
- A jackhammer generates around 100 db
- A jet taking off generates about 120 db



Tools and equipment

Here are some typical tools and equipment you might need.

Personal protective equipment (PPE)

- Steel cap boots
- High visibility safety vest
- Hearing protection
- Hard hat
- Goggles/glasses
- Gloves



Hand tools

- Shovel and levels
- Socket sets
- Screwdrivers or wrenches
- Wire brush



QUESTION 9

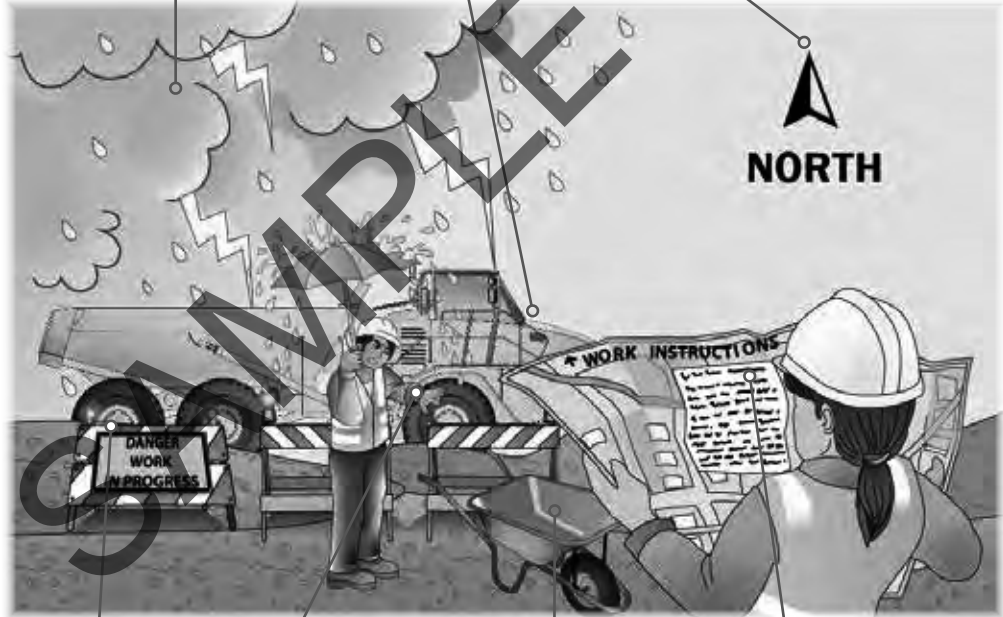
What do the job's work instructions explain?

Work instructions explain:

What to do in unexpected situations like bad weather

What the job is

Where the job is



How to do the job safely

How long the job will take

What tools and equipment you need

How to do the job from start to finish

QUESTION 10

What does the safety plan tell you about?

The safety plan tells you how the worksite meets all government rules.
The safety plan also tells you about:

What personal protective equipment (PPE) to wear

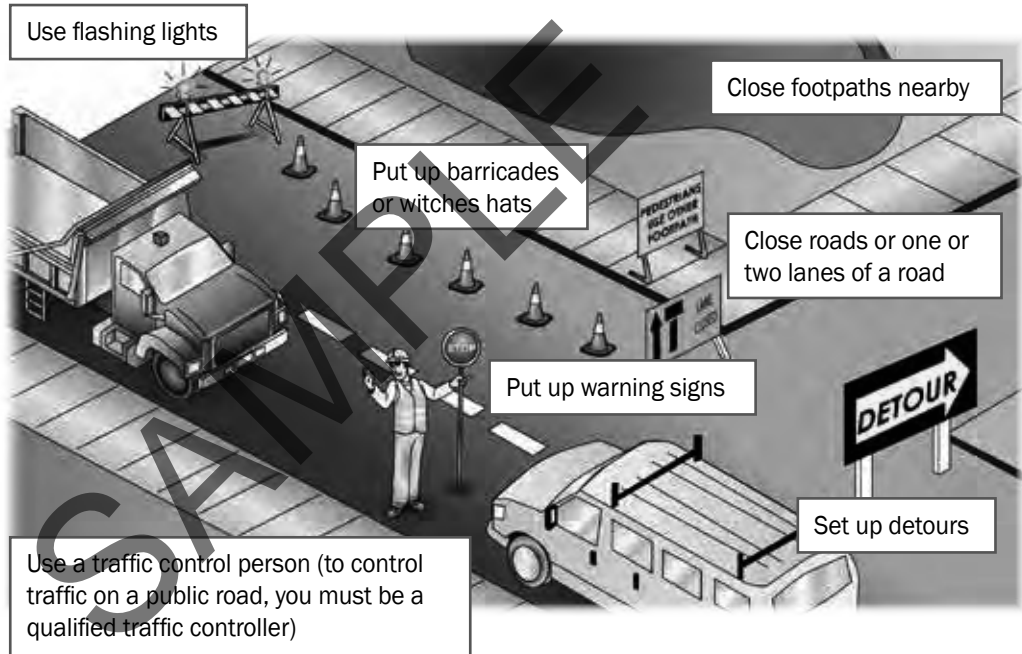


...CONTINUES ON NEXT PAGE

QUESTION 12

What can you do to control traffic in and around a worksite?

You can:



Operate the backhoe/loader in line with established requirements

Element 2



QUESTION 24

When do you test and inspect the backhoe/loader?

Every day. Always test and inspect before and after you use the backhoe/loader. You do this to make sure it's safe to use. Always follow workplace procedures for inspecting plant and equipment.



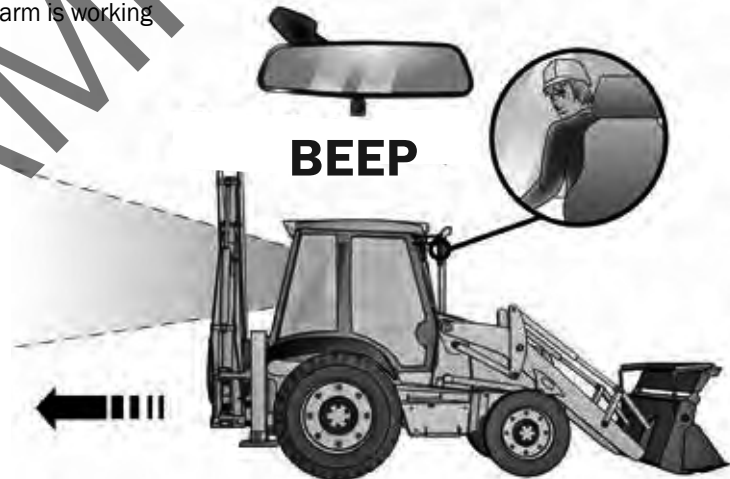
QUESTION 27**...CONTINUED FROM PREVIOUS PAGE**

What attachment checks do you do?

Move forward and backwards slowly and check the brakes and steering operation



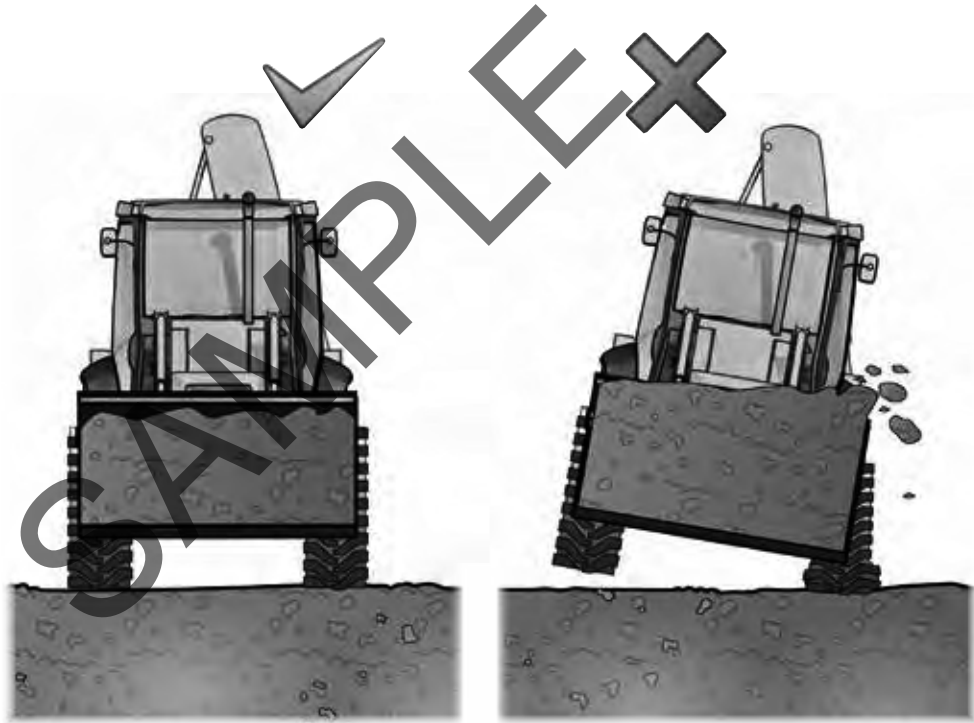
Check the reversing alarm is working



QUESTION 34

Why do the tyres on a backhoe/loader need to be equal pressure?

If the tyres are not equal pressure, the backhoe/loader could tip over sideways and injure you or someone else.



QUESTION 47

You are operating a backhoe/loader and it touches live powerlines.

What do you do?

Try to stay calm. **Stay in your seat if possible.**
Tell other people to keep away.



Try to lower the bucket away from the powerlines. Ask someone to get the power turned off.



...CONTINUES ON NEXT PAGE

QUESTION 47**...CONTINUED FROM PREVIOUS PAGE**

You are operating a backhoe/loader and it touches live powerlines.

What do you do?

In an emergency if you are alone or you think the machine might catch fire, jump **well clear** of the machine.



Never touch the ground and the machine at the same time - you may be electrocuted and killed.

**...CONTINUES ON NEXT PAGE**

QUESTION 47

...CONTINUED FROM PREVIOUS PAGE

You are operating a backhoe/loader and it touches live powerlines.

What do you do?

Area affected by electricity



Do not make contact with different ground areas at the same time



Shuffle away keeping your feet closely together

